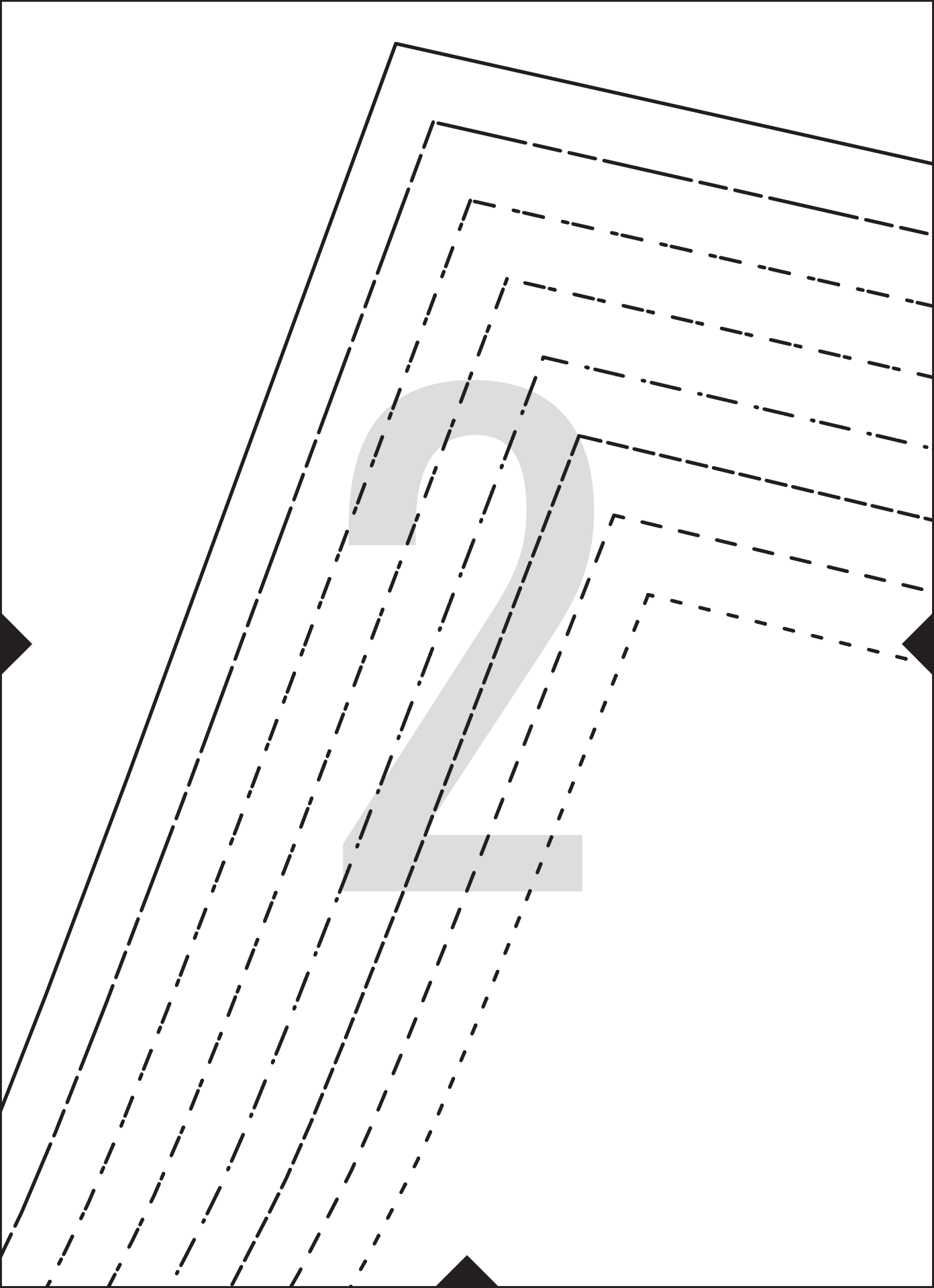
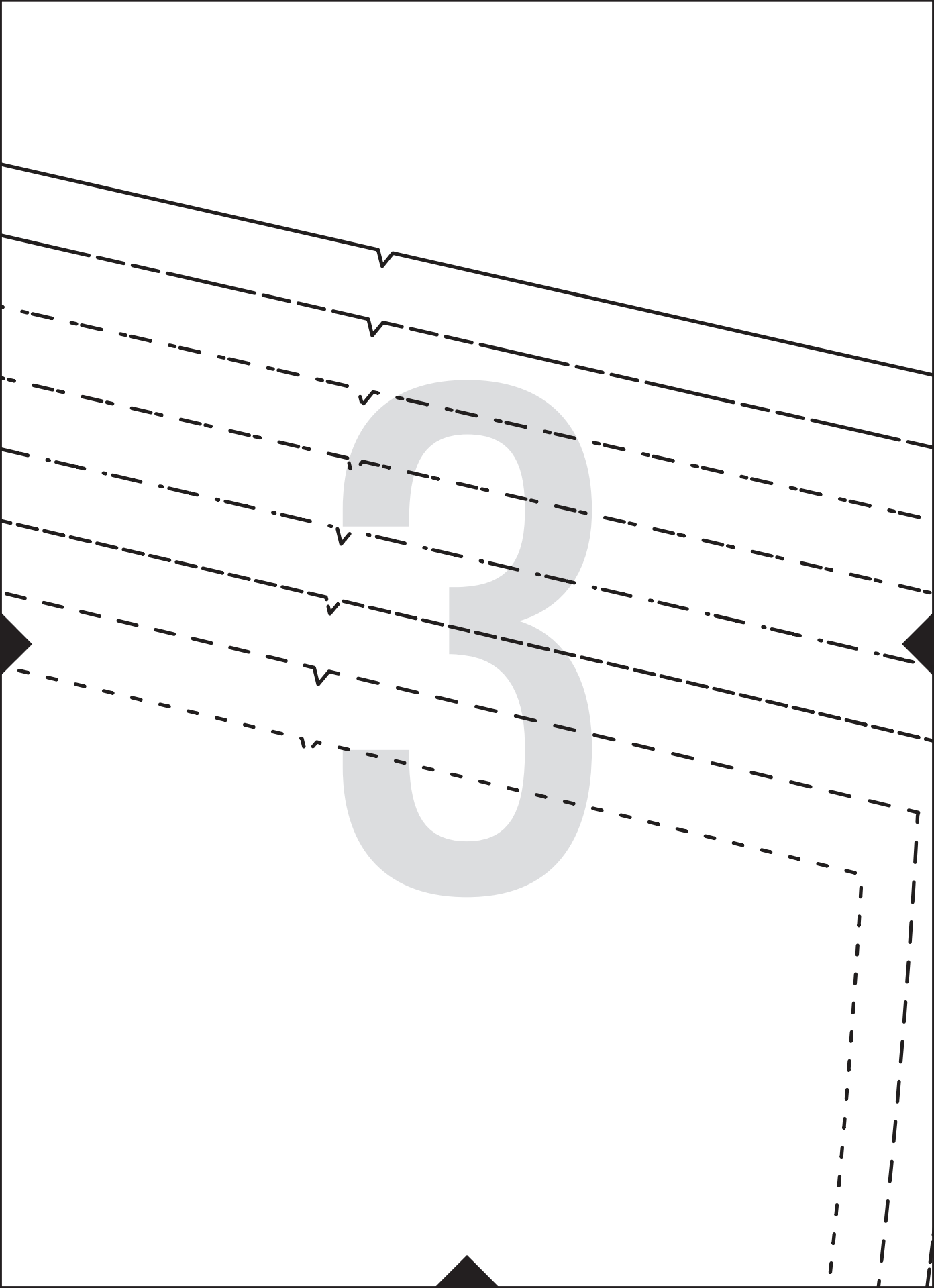
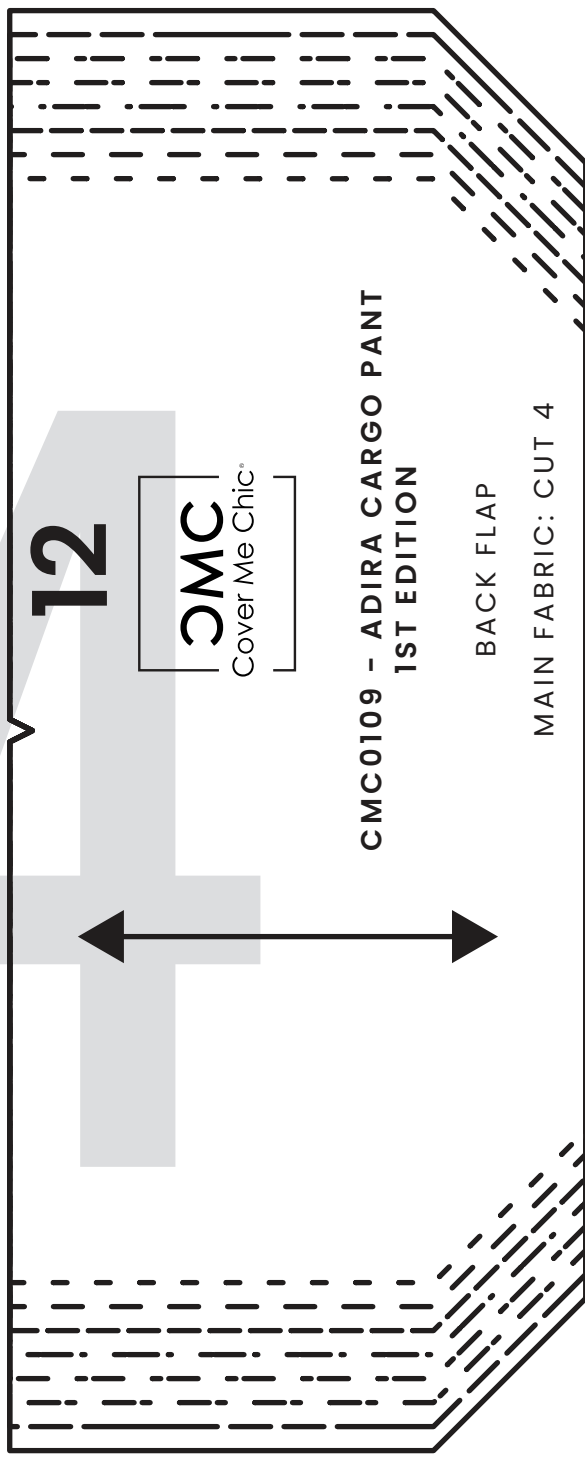
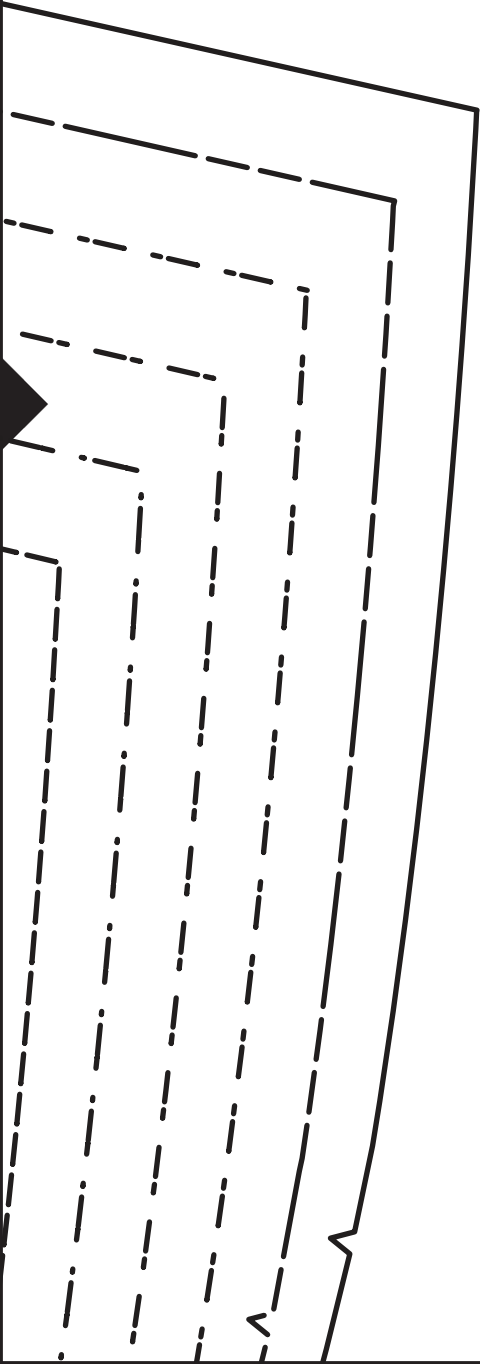


1







12

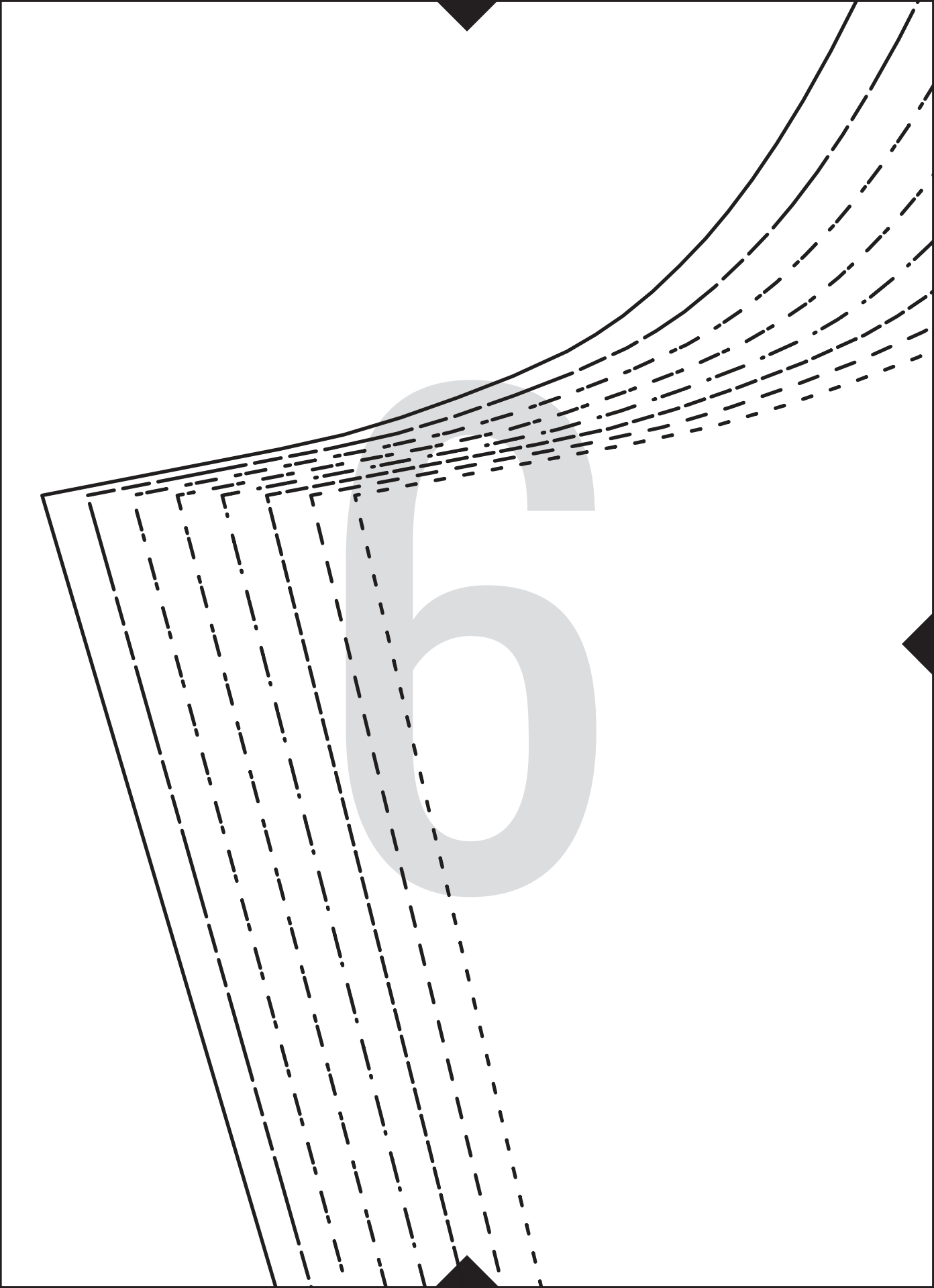
CMC  
Cover Me Chic

CMC0109 - ADIRA CARGO PANT  
1ST EDITION

BACK FLAP

MAIN FABRIC: CUT 4

5





9



**CMC0109 - ADIRA CARGO P  
1ST EDITION**

BACK

MAIN FABRIC: CUT 2



ANT

8







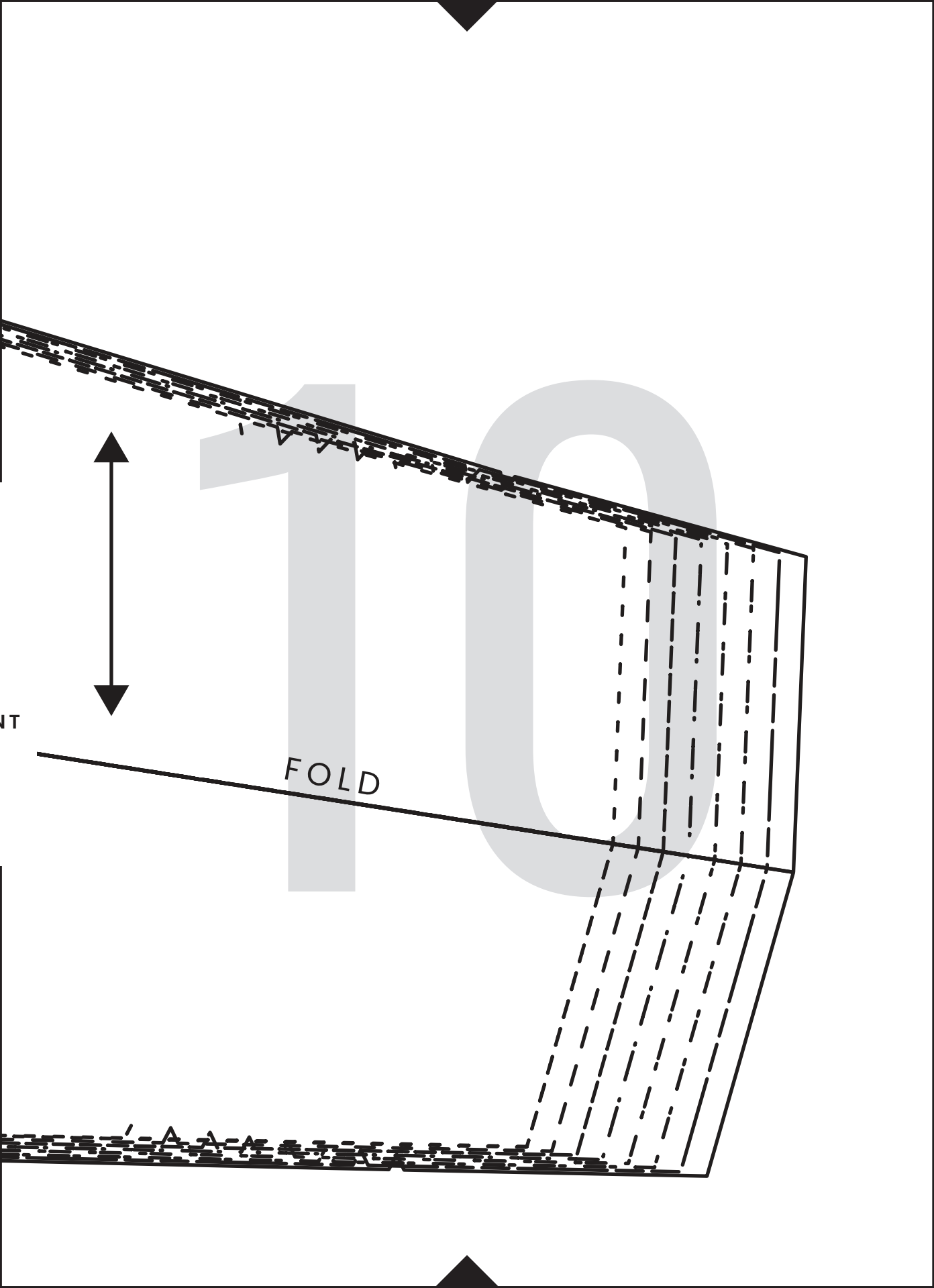
6

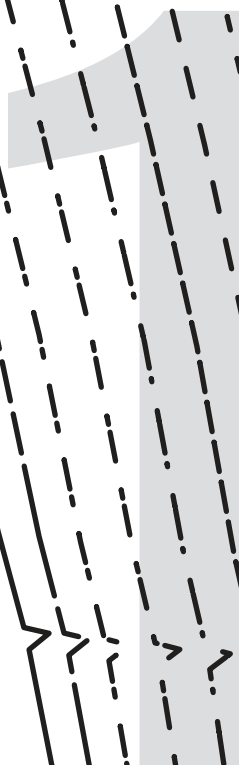


CMC0109 - ADIRA CARGO PAM  
1ST EDITION

CARGO POCKET FLAP

MAIN FABRIC: CUT 2

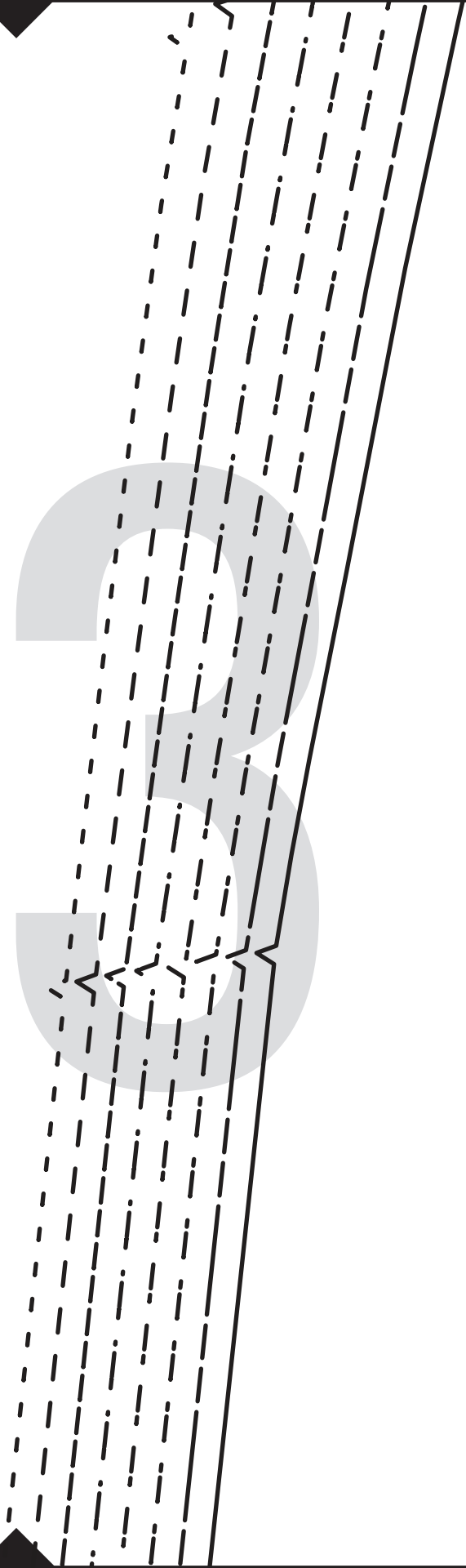




12

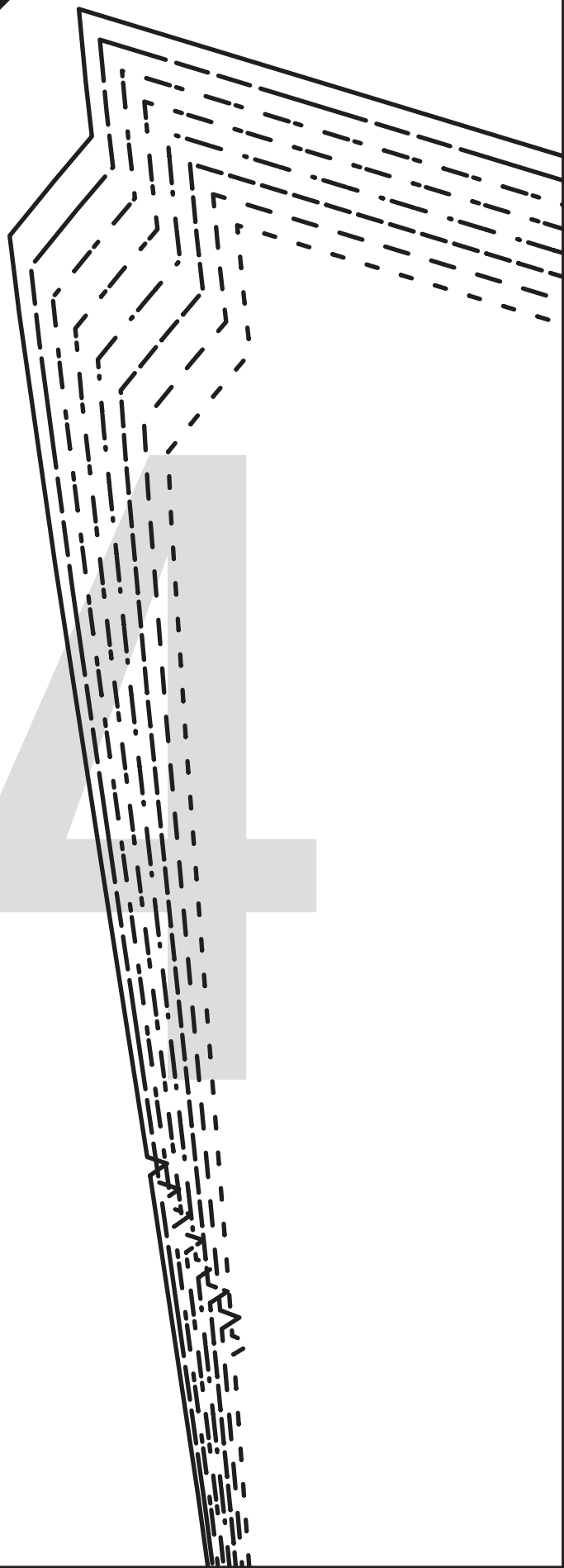
1

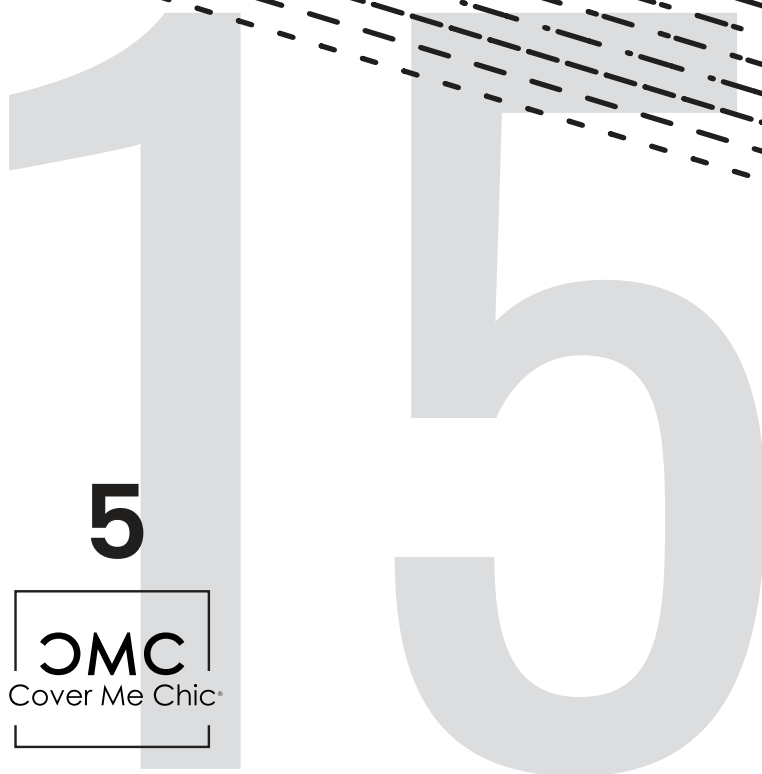
2



1

4



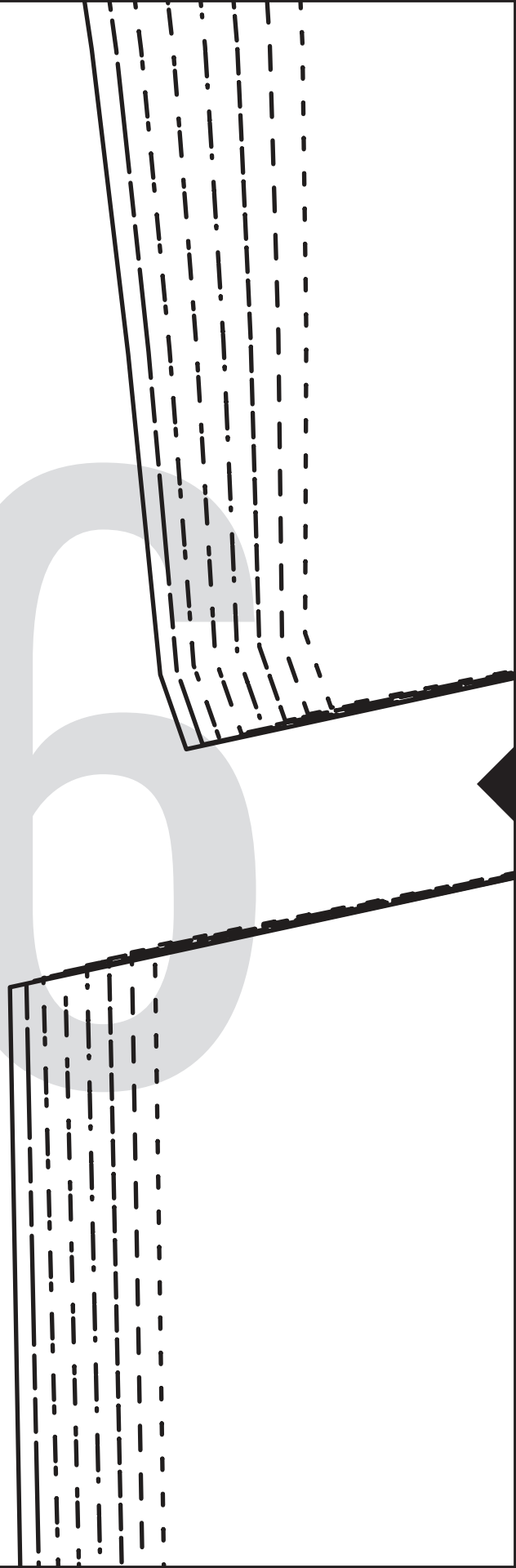


**CMC0109 - ADIRA CARGO PANT  
1ST EDITION**

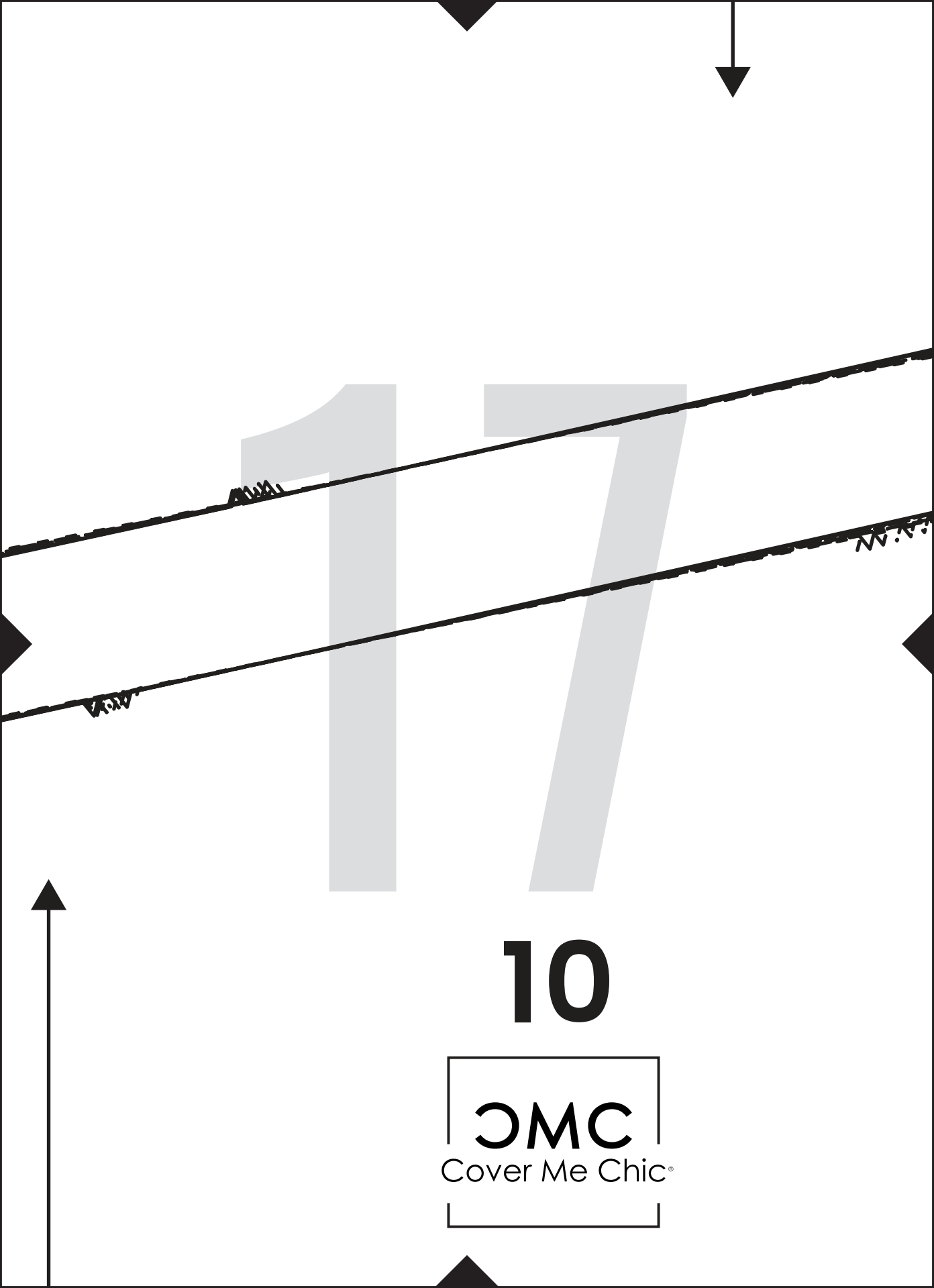
CARGO POCKET

MAIN FABRIC: CUT 2

16



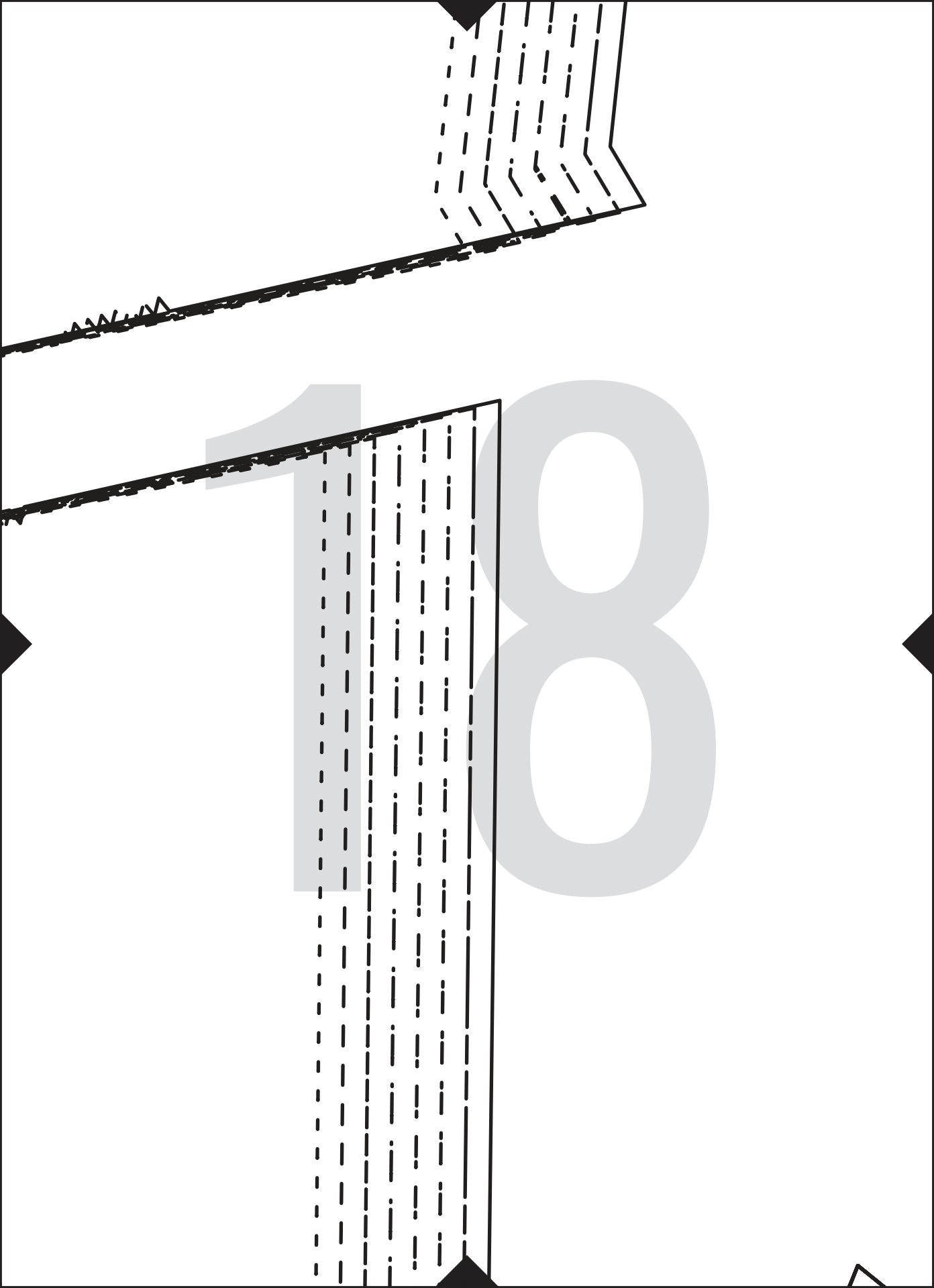


The background features several black lines and arrows. A vertical line on the left has an upward-pointing arrow at the bottom. A horizontal line at the top has a downward-pointing arrow on the right. Two diagonal lines cross the page, each with a small arrow pointing towards the center. The number '17' is rendered in a large, light gray, sans-serif font.

17

10





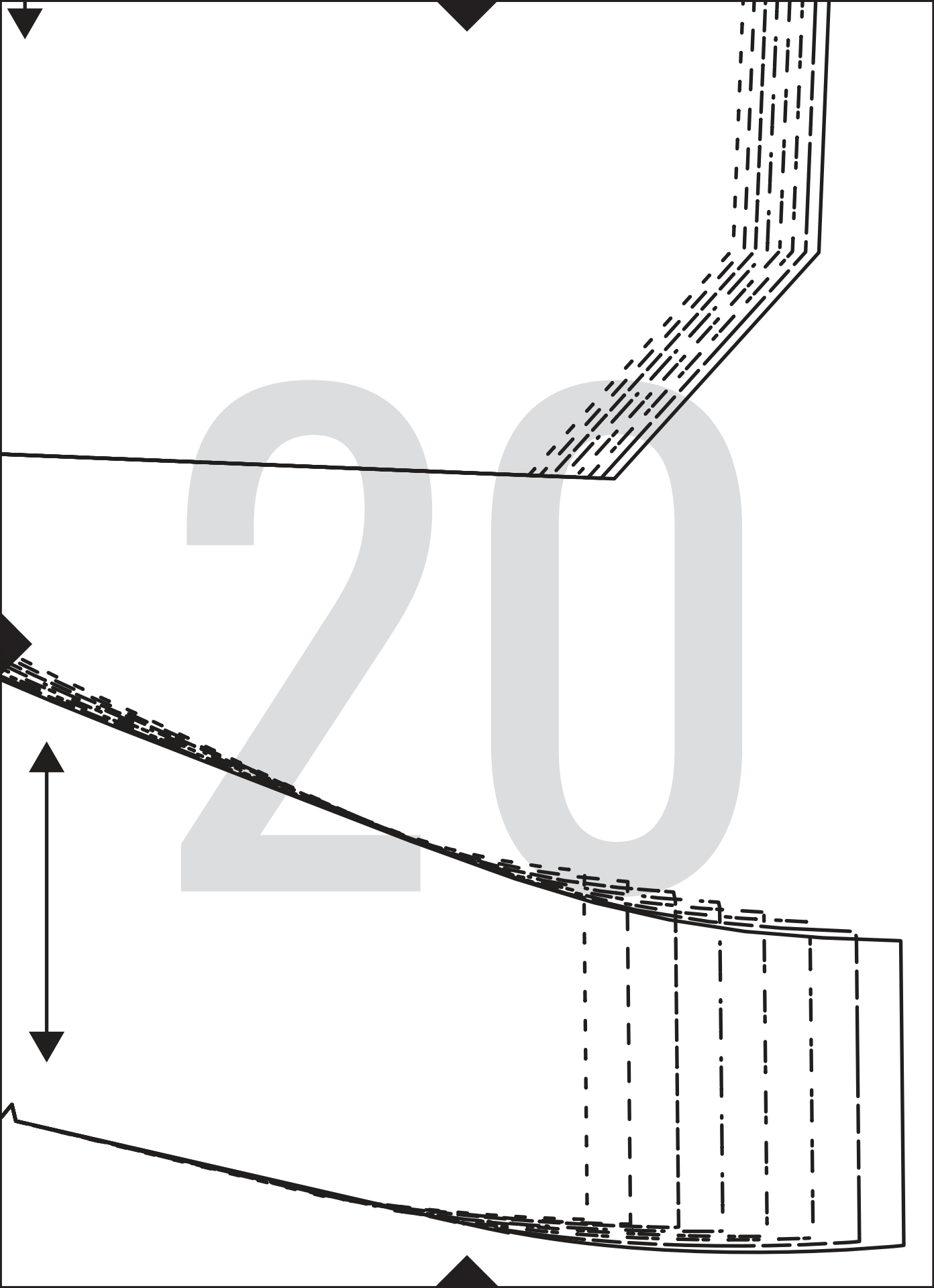
11



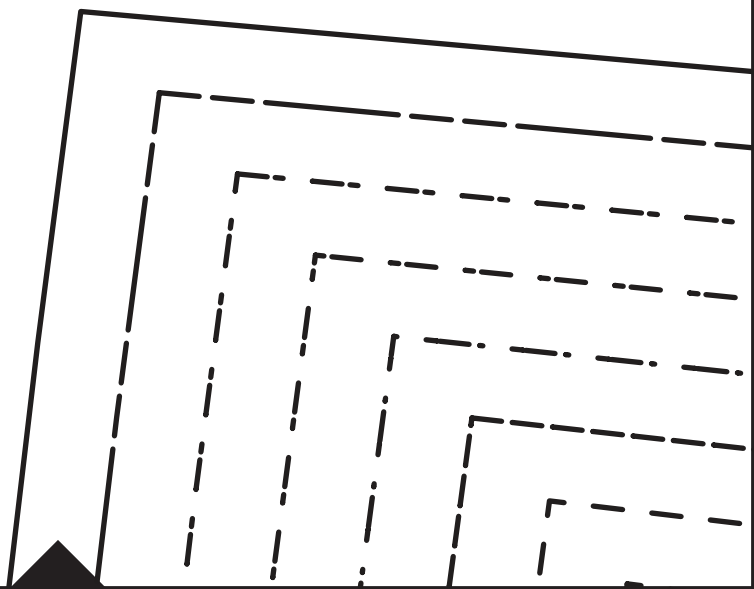
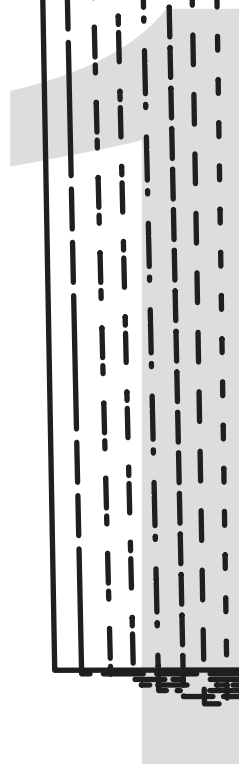
CMC0109 - ADIRA CARGO PANT  
1ST EDITION

BACK YOKE

MAIN FABRIC: CUT 2



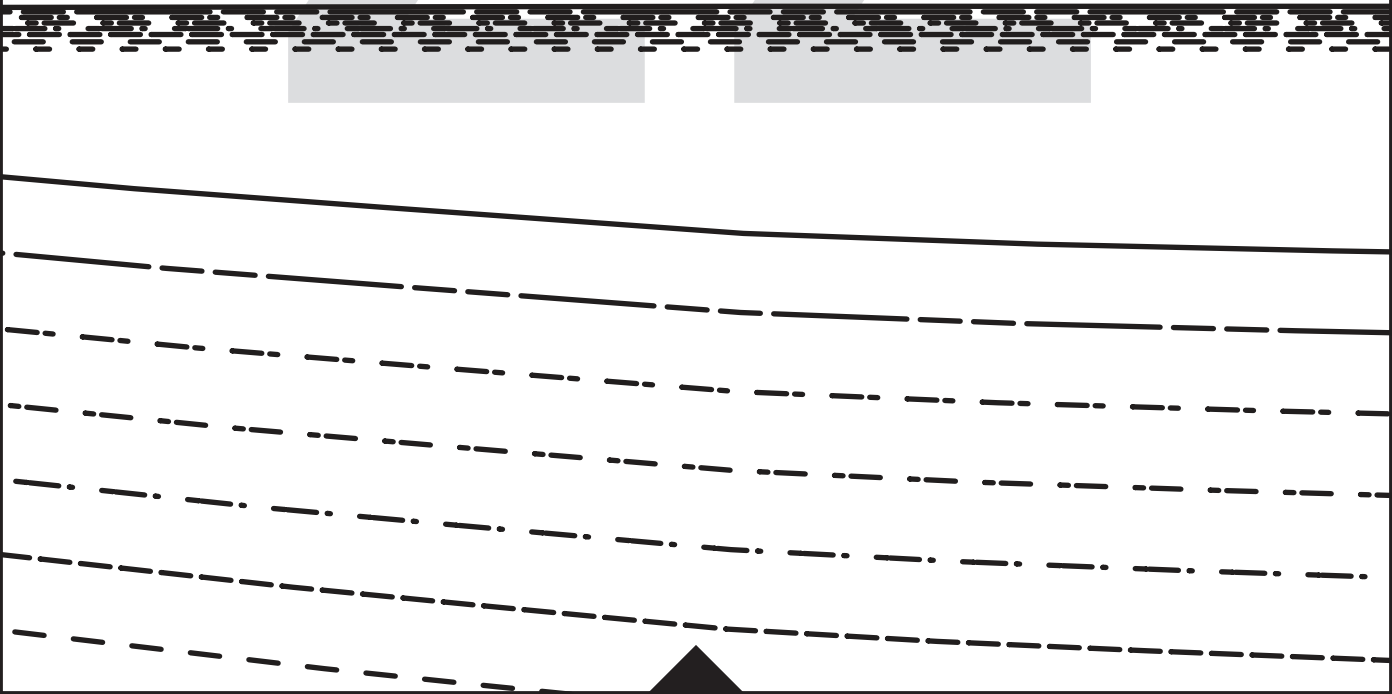
2



CMC0109 - ADIRA CARGO PANT  
1ST EDITION

BACK BOTTOM

MAIN FABRIC: CUT 2





CMC0109 - A  
15

FROM  
MAIN FA

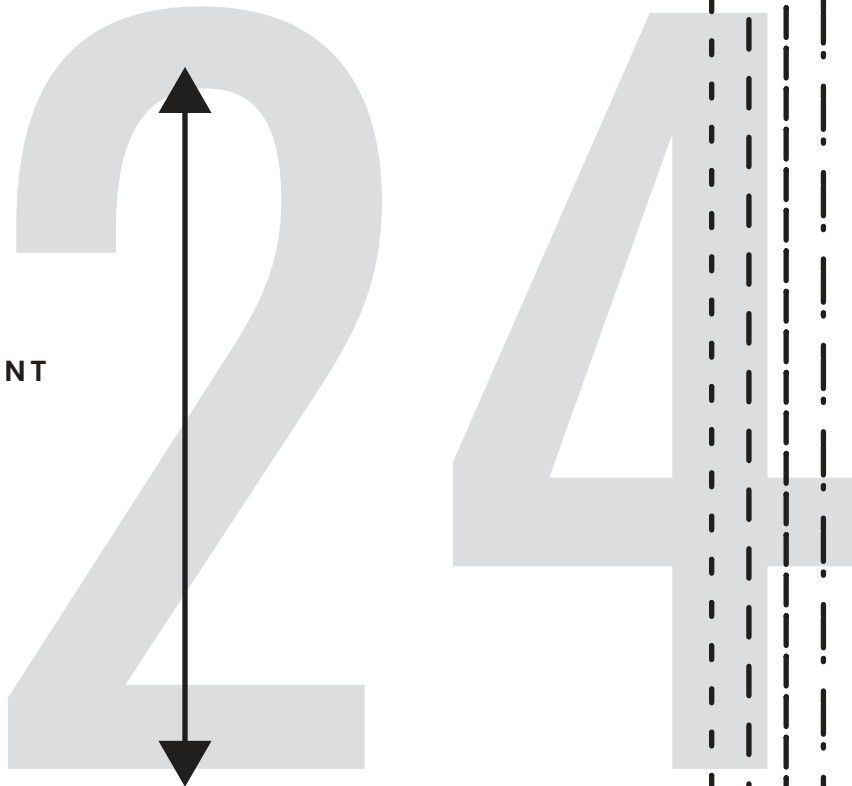
4



IRA CARGO PANT  
DITION

T POCKET

ABRIC: CUT 2





7



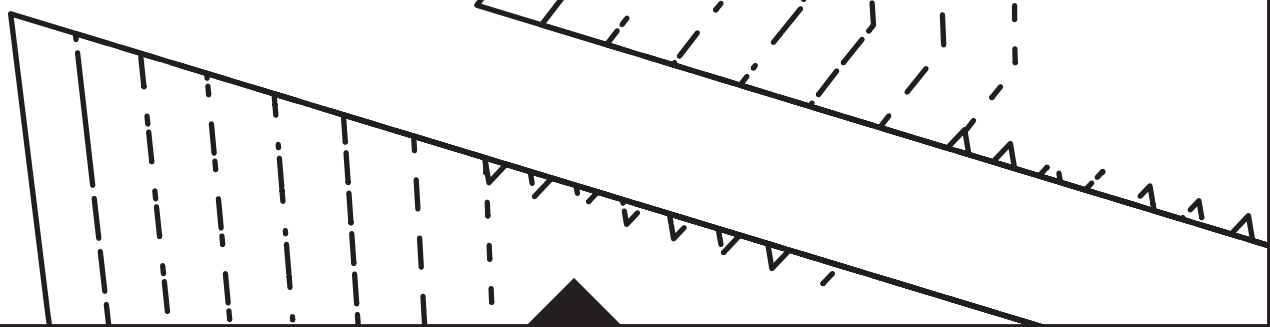
**CMC0109 - ADIRA CARGO PANT  
1ST EDITION**

RIGHT FLY

MAIN FABRIC: CUT 1



26



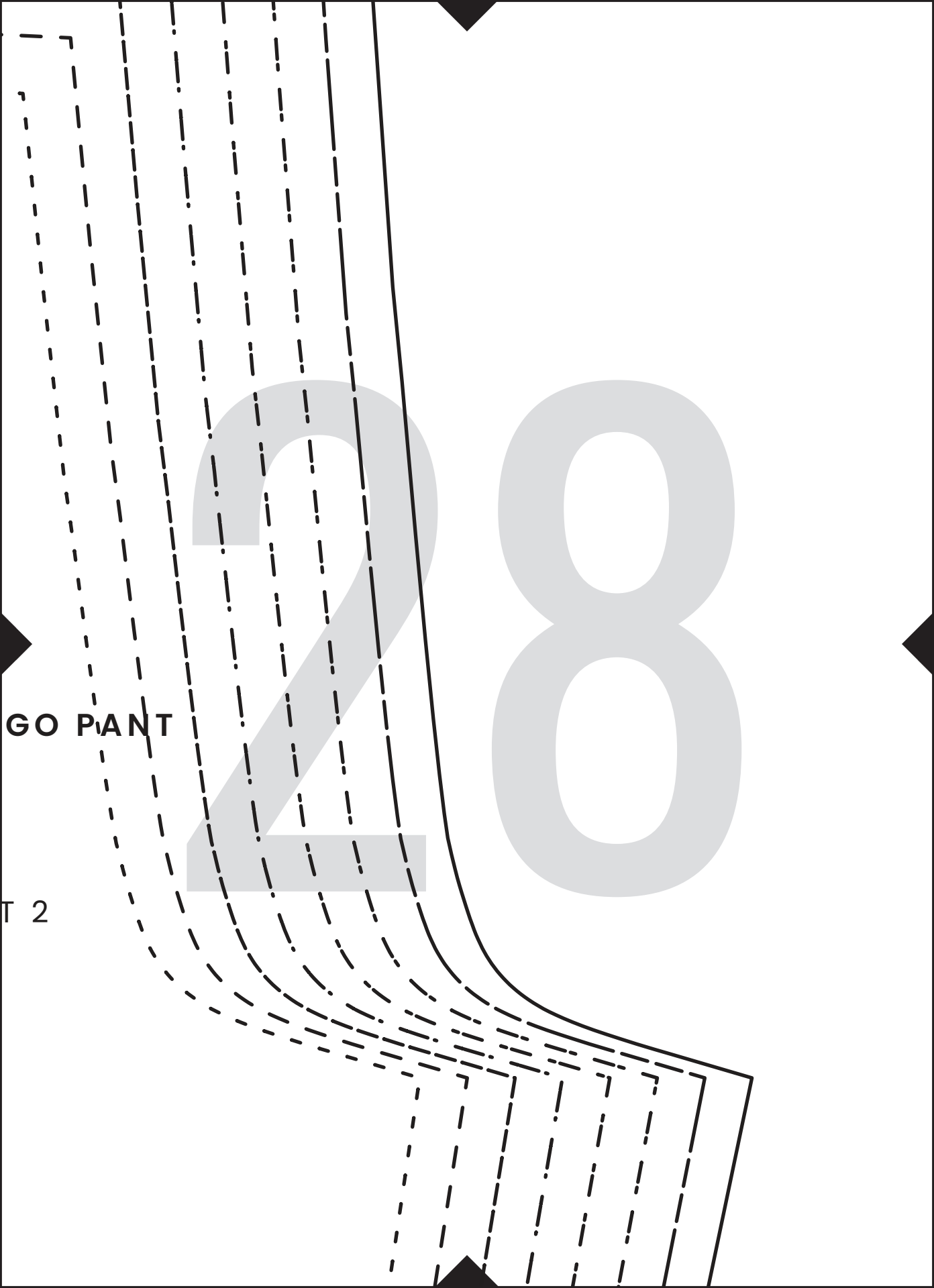


**CMC**  
Cover Me Chic®

**CMC0109 - ADIRA CAR**  
**1ST EDITION**

**FRONT**

**MAIN FABRIC: CU**



GO PANT

T 2

29

3

CMC

Cover Me Chic®

CMC0109 - ADIRA CARGO PA  
1ST EDITION

FRONT BOTTOM

ANT

30

8



CMC0109  
ADIRA CARGO PANT  
1ST EDITION

LEFT FLY

MAIN FABRIC: CUT 1



CS1

CMC010

M

2

CMC

Cover Me Chic®

09 - ADIRA CARGO PANT  
1ST EDITION

FRONT MIDDLE

MAIN FABRIC: CUT 2





15

CMC

Cover Me Chic

CMC0109  
ADIRA  
CARGO PANT  
1ST EDITION

BELT LOOPS

MAIN FABRIC:

CUT 1



[www.covermechic.com](http://www.covermechic.com)



**CMC0109**  
**ADIRA CARGO PANT**

**SIZES XS - 4XL**

Copyright © 2025  
Paradigm Squared LLC. All Rights Reserved.  
Copying and/or distributing is strictly forbidden.

**PATTERN SIZE KEY**

—————	SIZE 4XL
-----	SIZE 3XL
-----	SIZE 2XL
-----	SIZE XL
-----	SIZE L
-----	SIZE M
-----	SIZE S

CMC

Cover Me Chic®

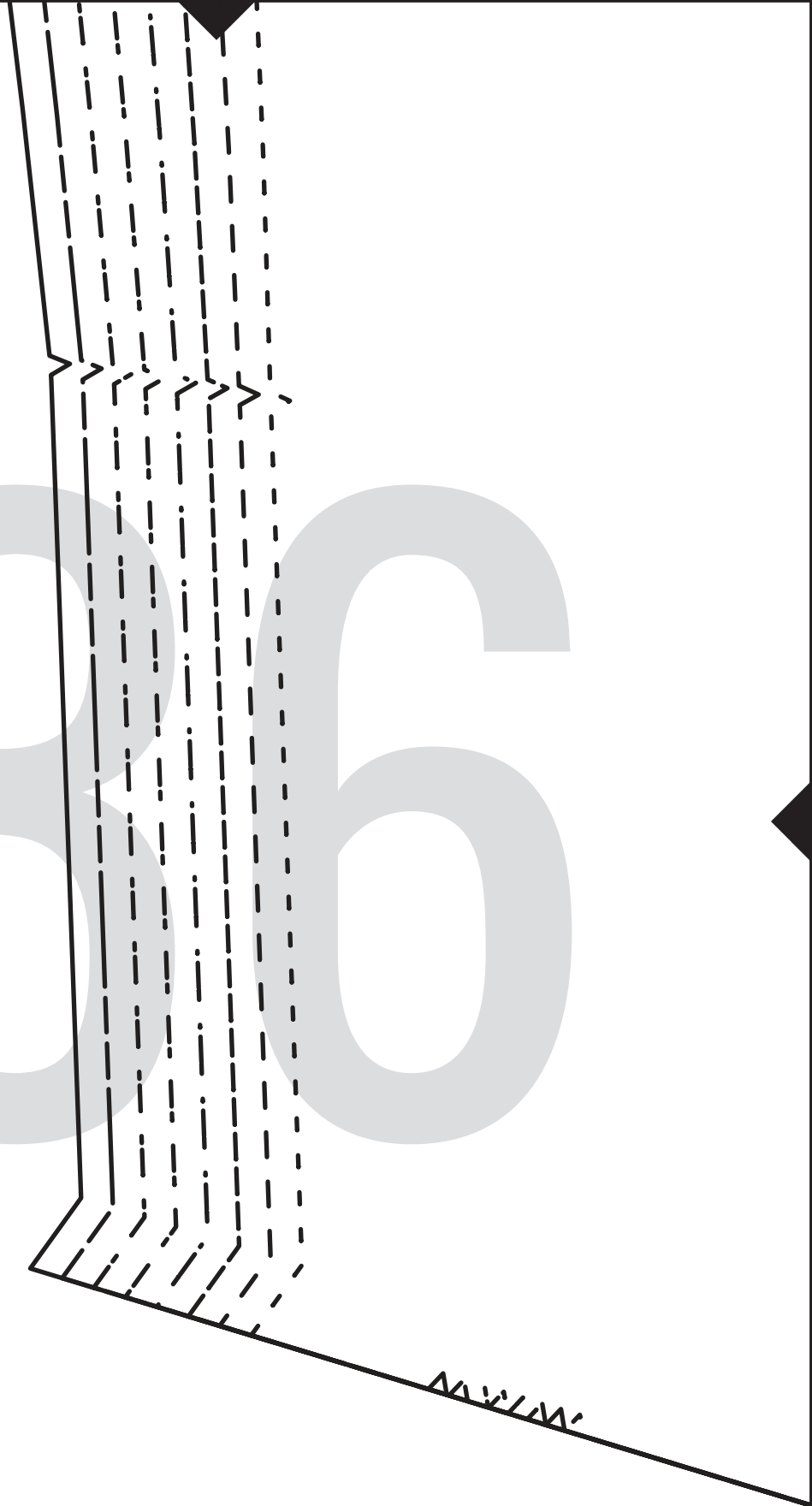
14

CMC0109 - ADIRA CARGO PANT  
1ST EDITION

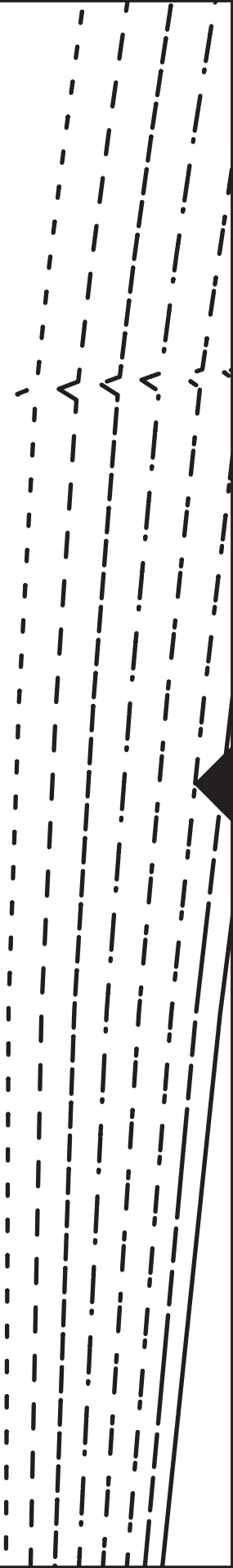
RIGHT WAISTBAND

MAIN FABRIC: CUT 2

36



37



38



## PATTERN SYMBOL KEY

▽ NOTCH

▽ ▽ DOUBLE NOTCH

○ — ○ BUTTON HOLE

○ MATCH TO SEAM

↔ GRAINLINE

↓ ↓ PLACE PATTERN ON FOLD

— LENGTHEN / SHORTEN LINE

### PLEASE NOTE:

SEAM ALLOWANCES ARE INCLUDED  
AND ARE ½" (1.27cm) UNLESS  
OTHERWISE STATED

### SHARE YOUR MAKES



#covermechicadirapant

Tag and follow us  
@covermechic

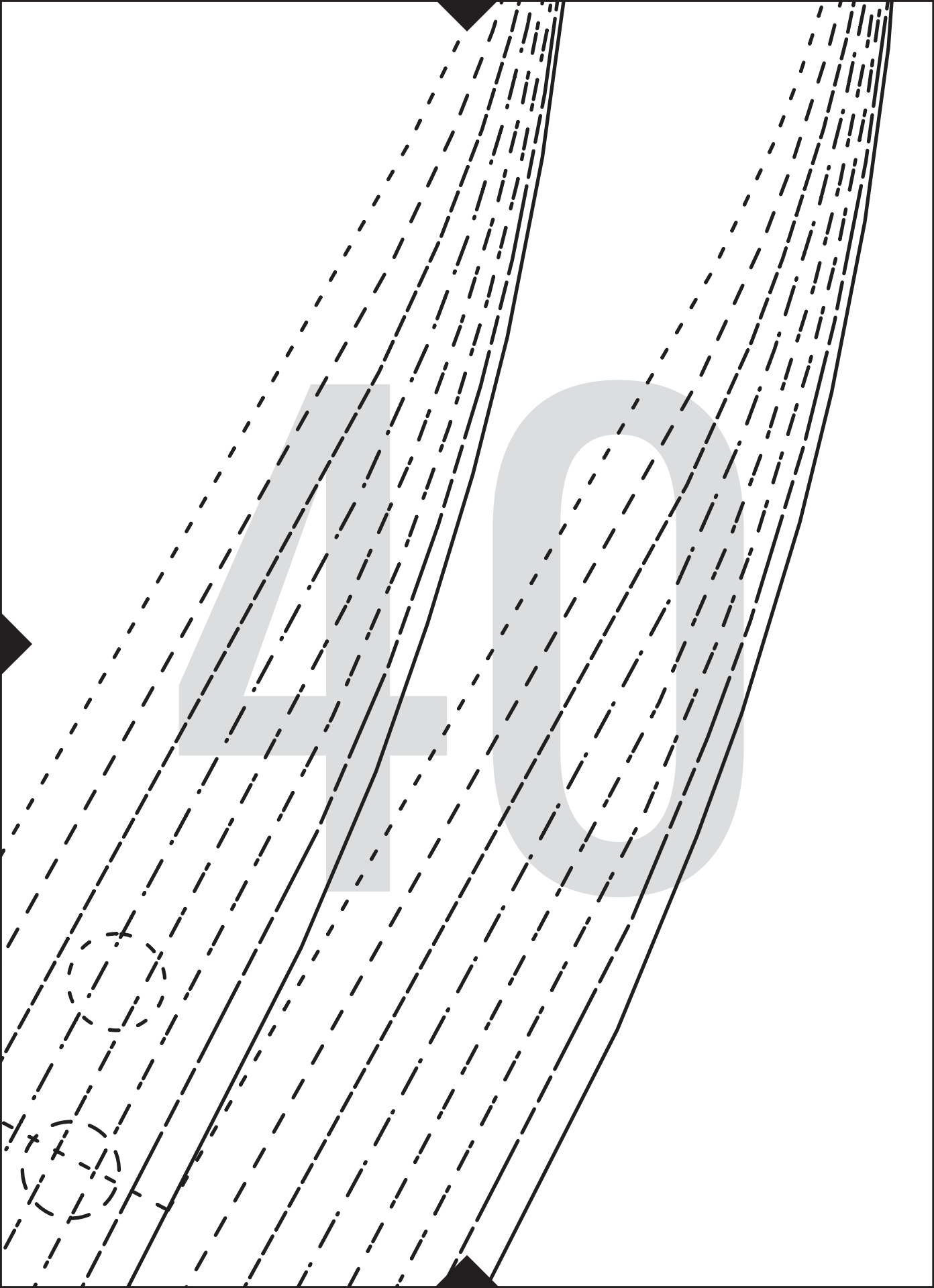
----- SIZE XS

3"

5cm

SCALE  
SQUARE

This pattern is Copyright © 2025,  
Paradigm Squared LLC. All Rights  
Reserved. Copying and/or distributing  
is strictly prohibited. Please respect my  
hard work and refer your interested  
friends and family to purchase their  
own copy of this pattern at  
[www.covermechic.com](http://www.covermechic.com).  
Thanks for your cooperation!





# 41



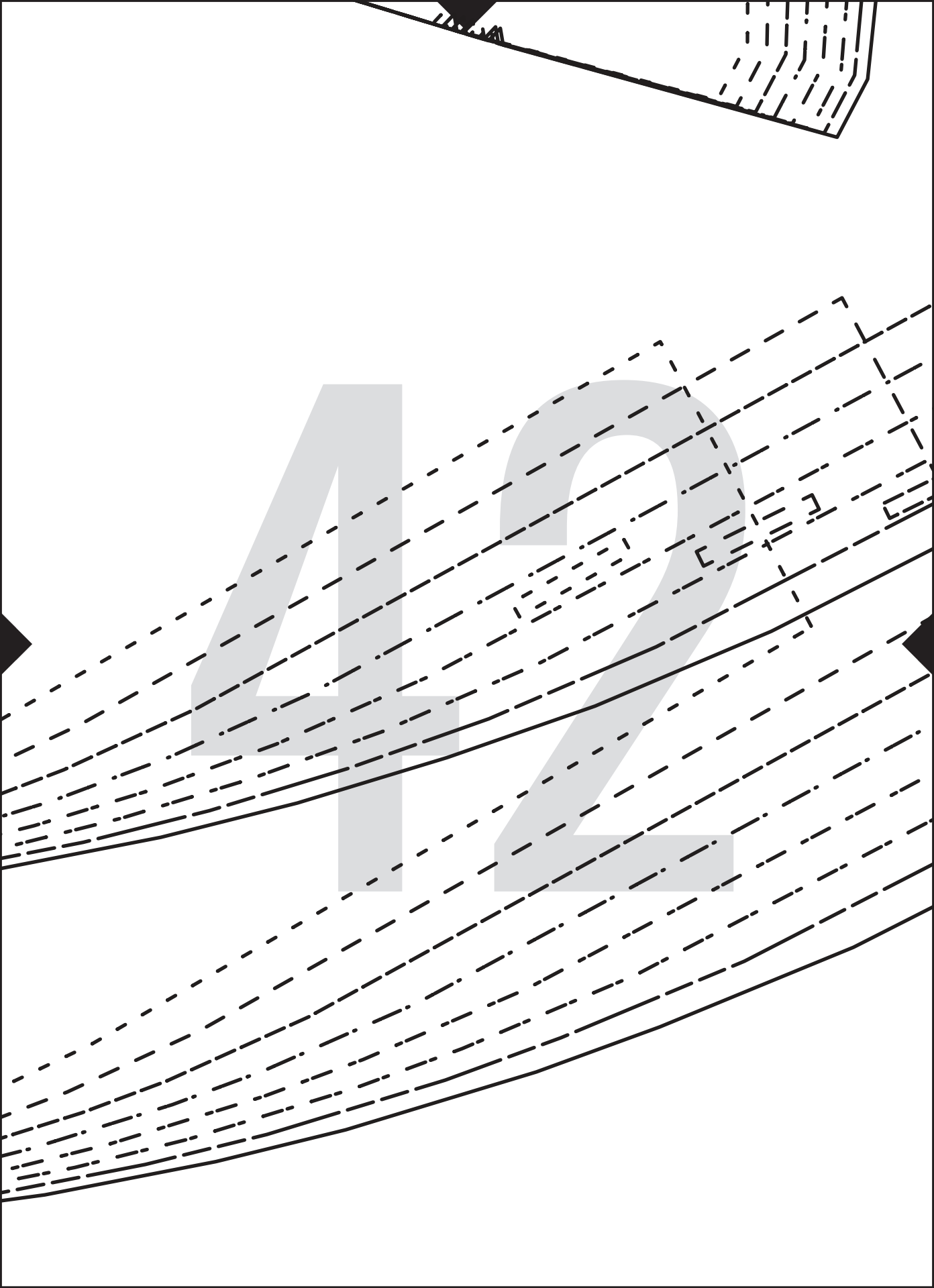
## 13

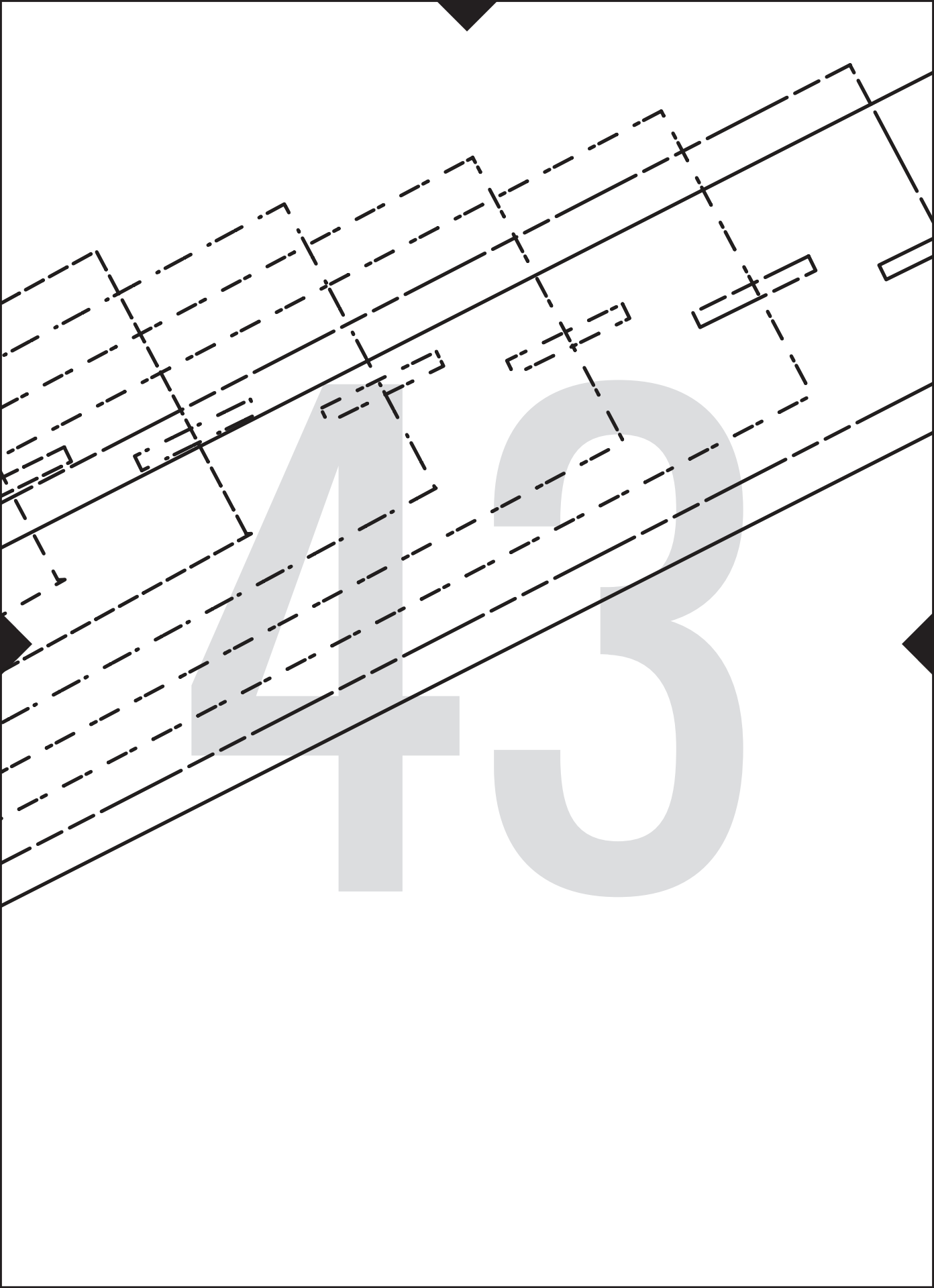
**CMC0109 - ADIRA CARGO PANT  
1ST EDITION**

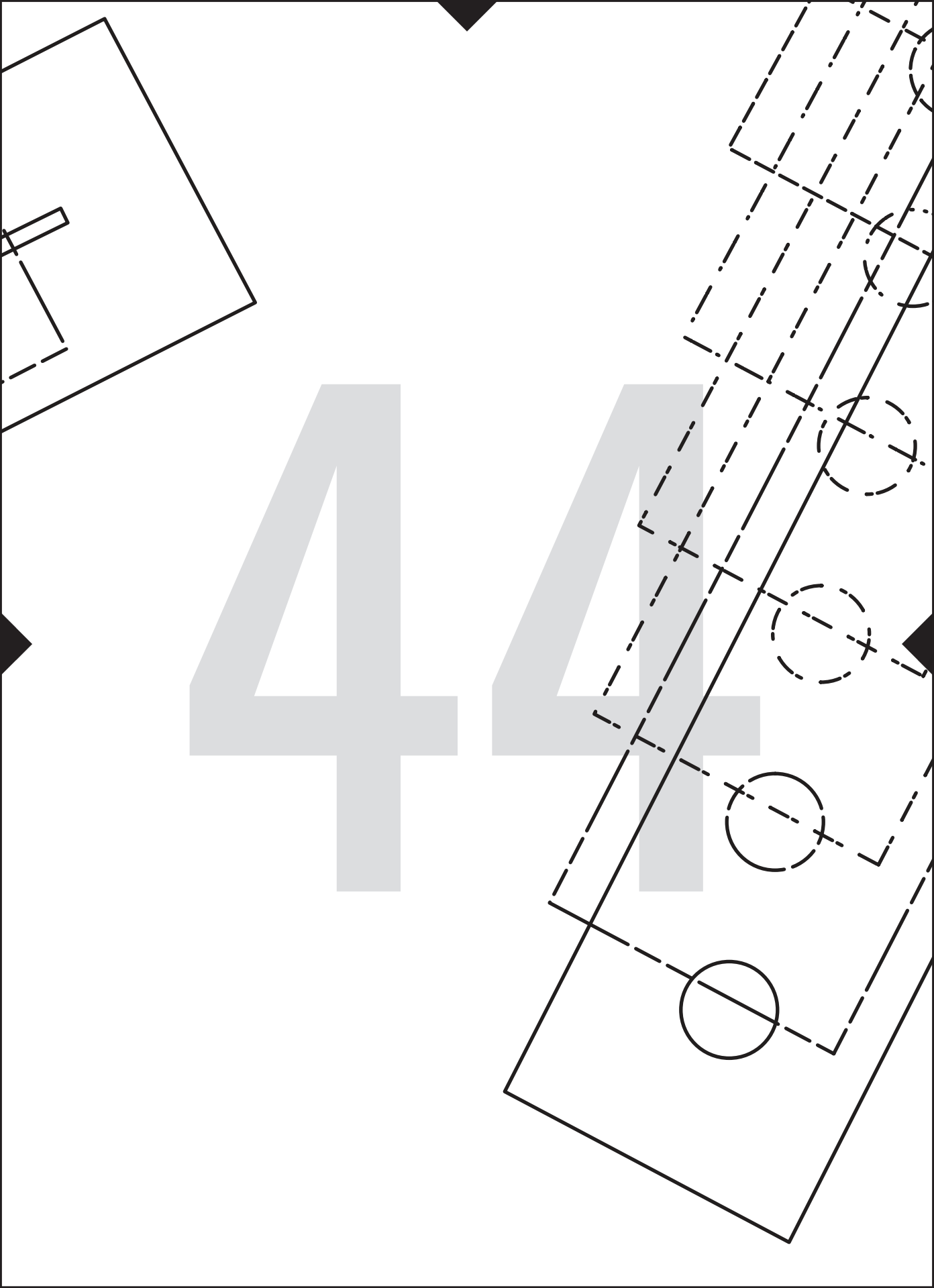
**LEFT WAISTBAND**

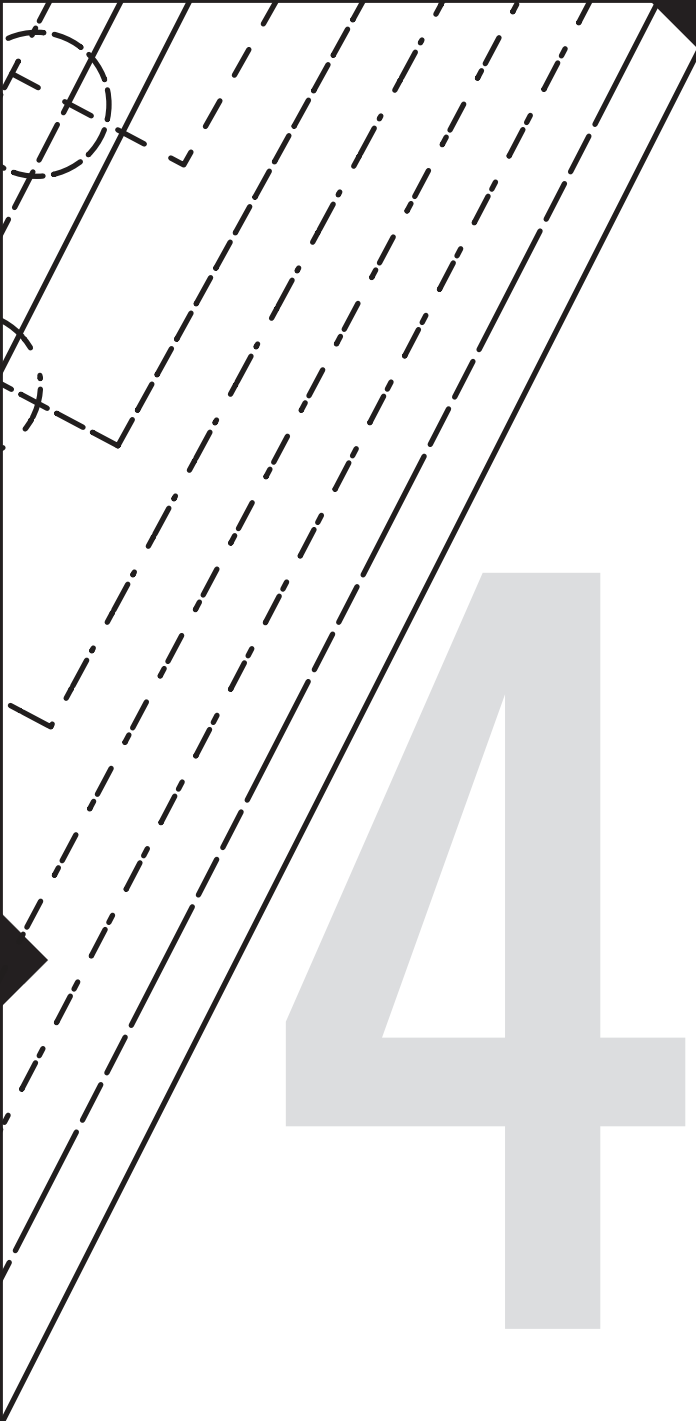
**MAIN FABRIC: CUT 2**











45