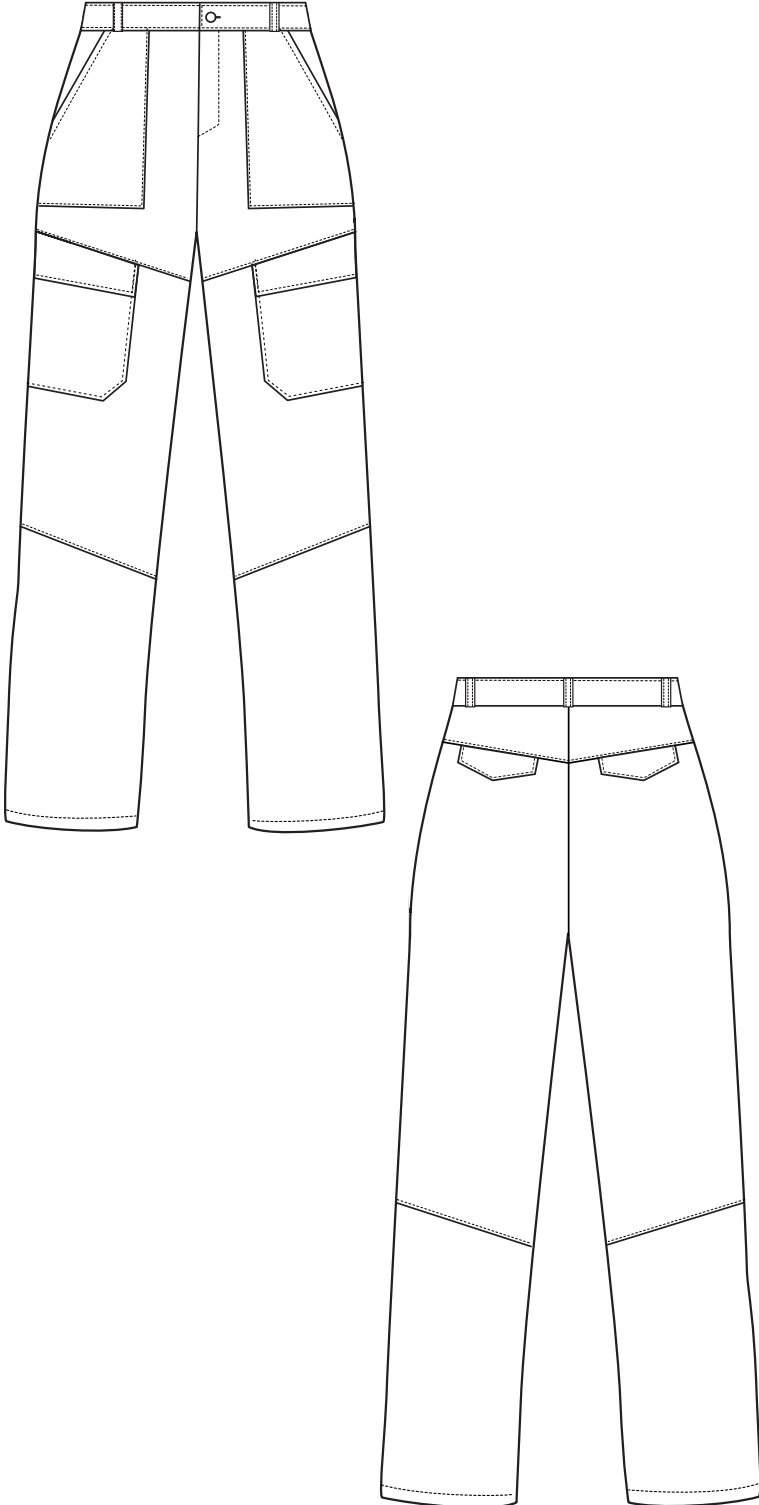


# ADIRA CARGO PANT

SIZES XS - 4XL

---



## DESCRIPTION:

Every detail of the Adira Cargo Pant is a nod to real, authentic living. The front patch pockets and well-placed cargo front pockets combine practicality with trend, inviting you to carry your essentials without compromising on style. With a classic zipper fly and sturdy belt loops, the Adira Cargo Pant ensures you feel secure and chic, whether you're out on the town or tackling a busy day at work.

## DIFFICULTY LEVEL:

Intermediate

## RECOMMENDED FABRICS:

Medium/ bottom weight woven fabric such as cotton twill, denim.

## NOTIONS REQUIRED:

- 7" Pant zipper
- 3/4" button
- All-purpose sewing thread

## CHOOSING A SIZE

This pattern is drafted for 5'4" (164.59cm) height. If in-between sizes, size up/down. I recommend making a muslin if you are unsure of your size and to ensure a perfect fit.

## GRADING BETWEEN SIZES

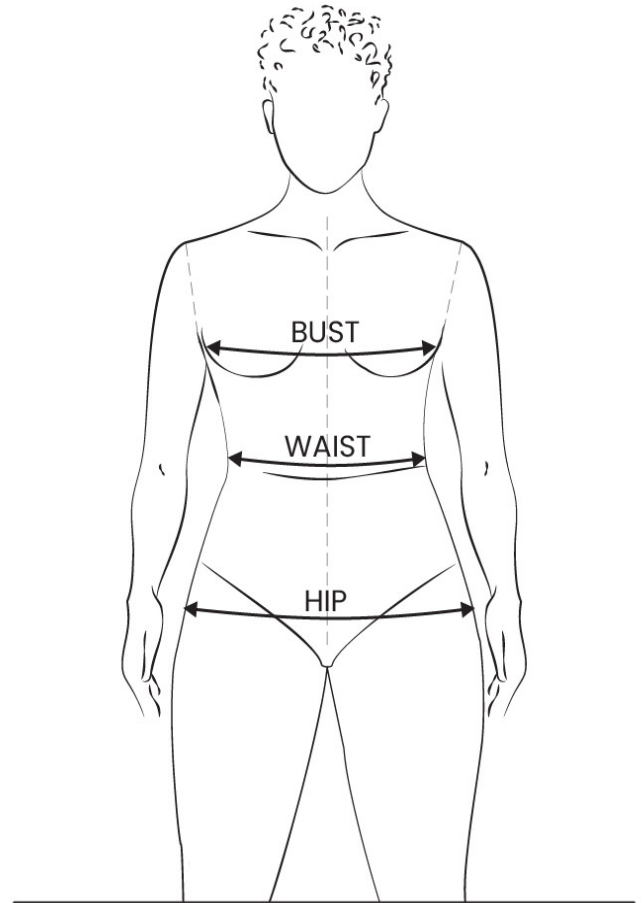
The pattern is nested so that you can grade between sizes if necessary. Simply print the sizes you need and draw a diagonal line between the sizes to grade between them.

## HOW TO LENGTHEN/SHORTEN

Use the 'LENGTHEN OR SHORTEN HERE' lines on the pattern to lengthen or shorten your pattern.

## FIT ISSUES/SOLUTIONS

Generally when fitting patterns, use your largest measurement (bust, waist or hip) to select your size. If your waist or hip measurement needs to be larger or smaller you can cut between sizes.



## NOTES ON EASE

How to find how much ease is in your garment?

Compare your body measurement with the garment's finished body measurements. The difference determines how much ease is in your garment.

## ADIRA CARGO PANT

The Adira Cargo Pant is fitted at the waist, semi fitted at the hip and loose through the leg.

### EASE KEY

<b>FITTED</b> 0 - 3" (0 - 8cm)
<b>SEMI-FITTED</b> 4 - 6" (10 - 15.5cm)
<b>LOOSE-FITTED</b> 7" & up (18cm & up)

# IMPERIAL FABRIC & SIZING

3

## BODY MEASUREMENTS (INCHES)

SIZE	0	2	4	6	8	10	12	14	16	18	20	22	24	26	28	30
	XS		S		M		L		XL		2XL		3XL		4XL	
WAIST	25	27	28	30	31	33	34	36	37	39	40	42	43	45	46	48
HIP	34	36	37	39	40	42	43	45	46	48	49	51	52	54	55	57

## FABRIC REQUIREMENTS (YARDS)

45"	2 3/4	2 3/4	2 3/4	2 3/4	3 1/2	3 1/2	3 1/2	3 1/2
60"	2 1/4	2 1/4	2 1/4	2 1/4	2 3/4	2 3/4	2 3/4	2 3/4

## FINISHED GARMENT (INCHES)

WAIST	33	34 1/2	36	37 1/2	39	40 1/2	42	43 1/2
HIP	45	46 1/2	48	49 1/2	51	52 1/2	54	55 1/2
LENGTH FROM CBW	45	45 1/2	46	46 1/2	47	47 1/2	48	48 1/2

# METRIC FABRIC & SIZING

## BODY MEASUREMENTS (CENTIMETERS)

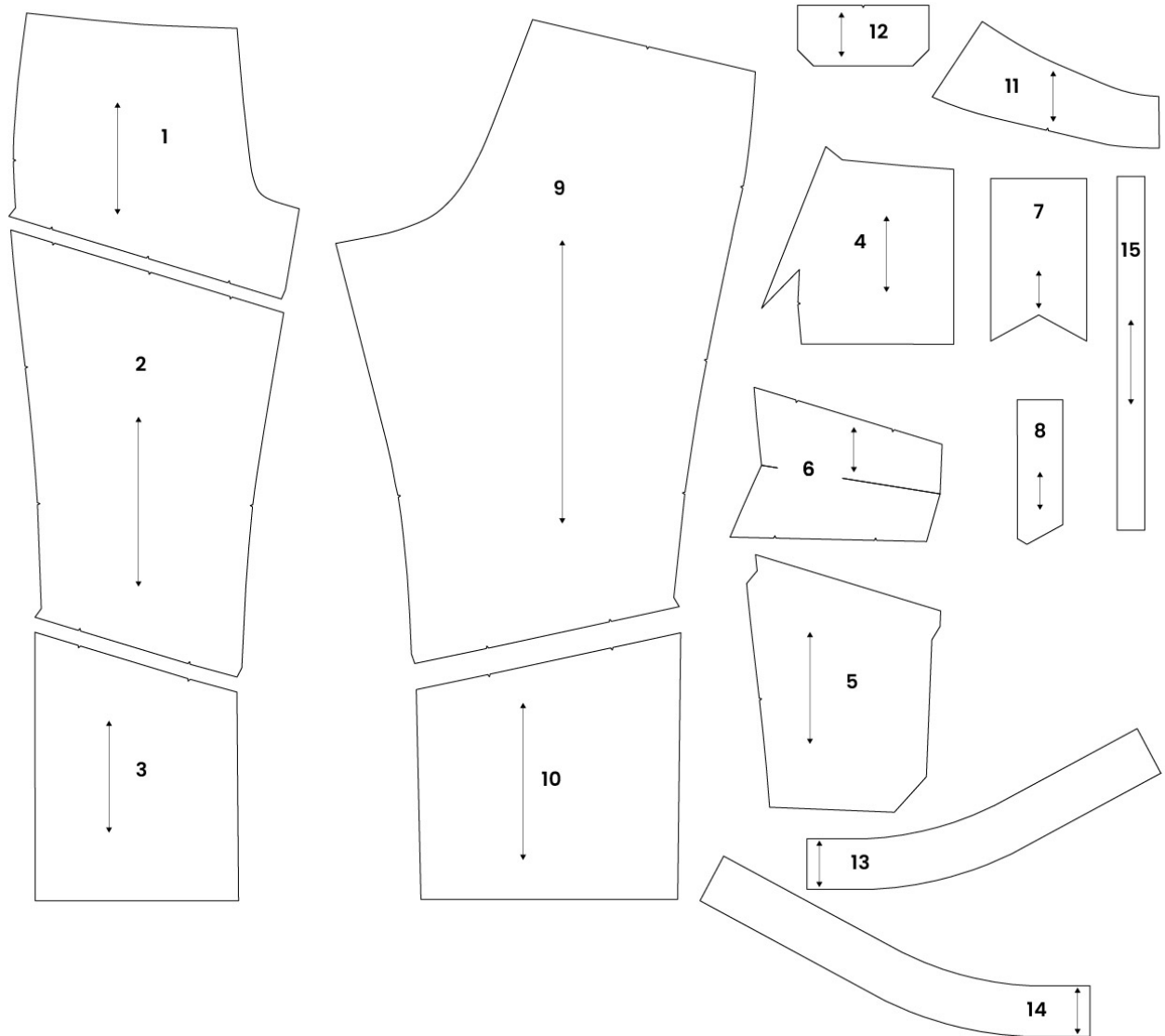
SIZE	0	2	4	6	8	10	12	14	16	18	20	22	24	26	28	30
	XS		S		M		L		XL		2XL		3XL		4XL	
WAIST	63.5	68.6	71.12	76.2	78.7	83.8	86.4	91.4	94	99.1	101.6	106.7	109.2	114.3	116.8	121.9
HIP	86.4	91.4	94	99.1	101.6	106.7	109.2	114.3	116.9	121.9	124.5	129.5	132.1	137.2	139.7	144.8

## FABRIC REQUIREMENTS (METERS)

45"	2.51	2.51	2.51	2.51	3.2	3.2	3.2	3.2
60"	2.06	2.06	2.06	2.06	2.51	2.51	2.51	2.51

## FINISHED GARMENT (CENTIMETERS)

WAIST	83.8	87.6	91.4	95.3	99.1	102.9	106.7	110.5
HIP	114.3	118.1	121.9	125.7	129.5	133.4	137.2	141.0
LENGTH FROM CBW	114.3	115.6	116.8	118.1	119.4	120.7	121.9	123.2



1. FRONT

2. FRONT MIDDLE

3. FRONT BOTTOM

4. FRONT POCKET

5. CARGO POCKET

6. CARGO POCKET FLAP

7. RIGHT FLY

8. LEFT FLY FACING

9. BACK

10. BACK BOTTOM

11. BACK YOKE

12. BACK FLAP

13. LEFT WAISTBAND

14. RIGHT WAISTBAND

15. WAISTBAND LOOPS

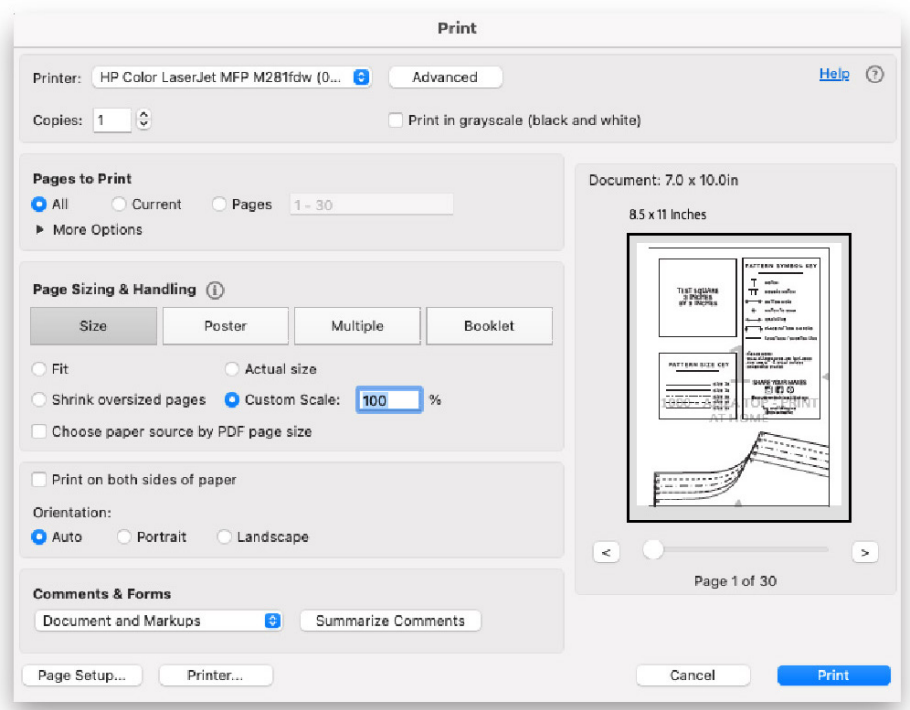
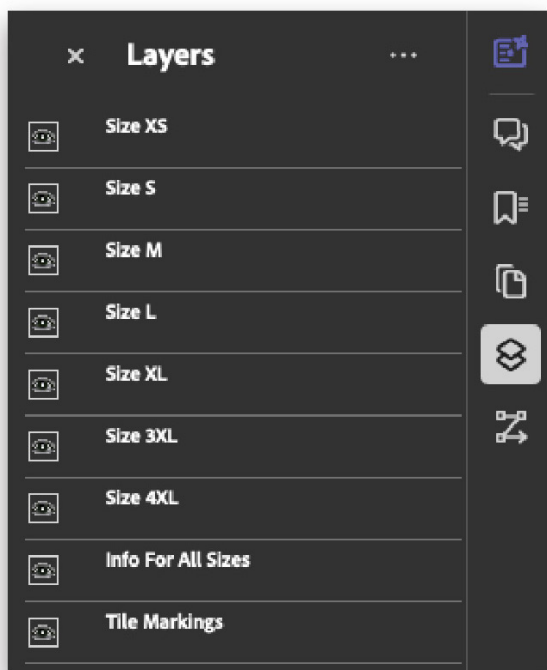
# PRINTING THE PATTERN

6

## PRINTING LAYERS INSTRUCTIONS

This pattern includes layered pattern tiles that allow you to choose only the sizes you wish to print. In Acrobat Reader, click on the layers icon while the file is open. Click on the eyeball to turn size layers on or off. Be sure to leave the 'Info For All Sizes' and 'Tile Marking' layers turned on.

*Be sure to set your printer to not scale the pattern pieces by selecting either "Actual Size" or "Custom Scale: 100%" in your print dialog.*



## COPY SHOP PRINTING

There are two wide format versions that can be printed at a copy shop. The width of the A0 file is 33.1" x 46.8" (84 x 119 cm) and the US copy shop size is 36" x 48". The copy shop file can also be printed contentiously on 36" wide paper.

There are two pages in both formats. Check with your intended printer for detailed submission information. Be sure to tell them to not scale the PDF!

## TILE ASSEMBLY & TAPING INSTRUCTIONS

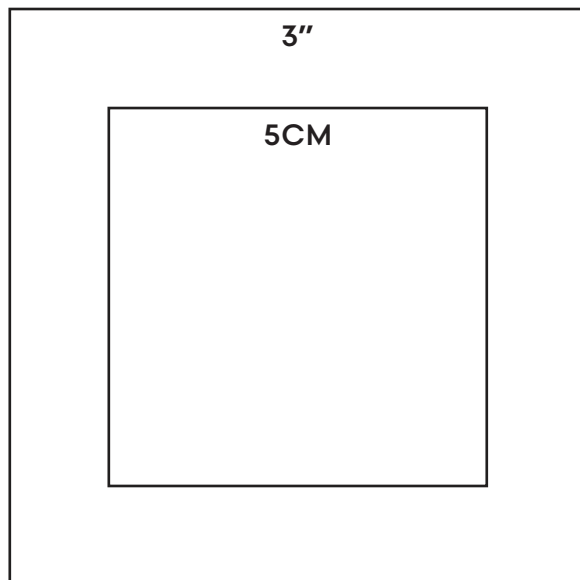
Each page includes a transparent number to show how it should be organized. Tiles 1-5 run across the top of the pattern, the subsequent tiles follow below.

Cut one long side and one short side @ the boarder of each page. Stay consistent when cutting. Align the diamonds so that they matches up according to the layout shown on this page.

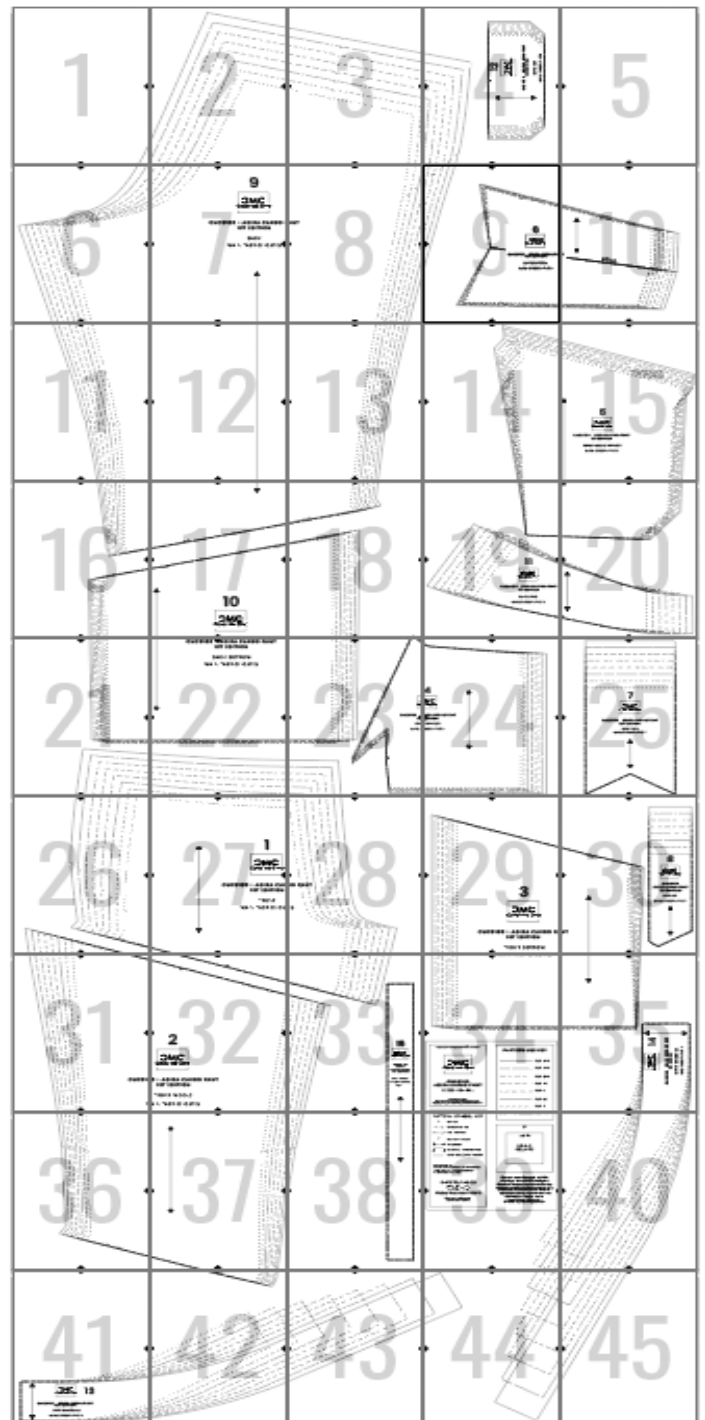
This tiled version can be printed on both A4 or US letter-sized paper and contains all of the XS -4X pattern pieces.

Make sure to check the 3" or 5cm scaling square on the pattern before printing all pages.

### TEST SQUARE EXAMPLE



## SIZE XS - 4XL



## ILLUSTRATION KEY



FABRIC: RIGHT SIDE

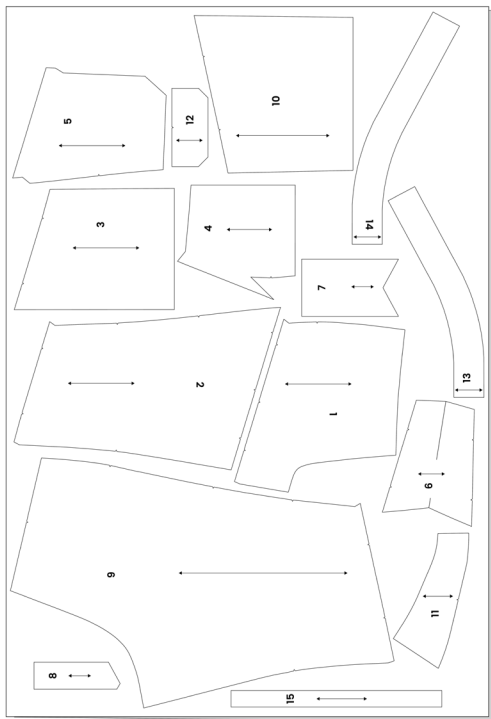


FABRIC: WRONG SIDE

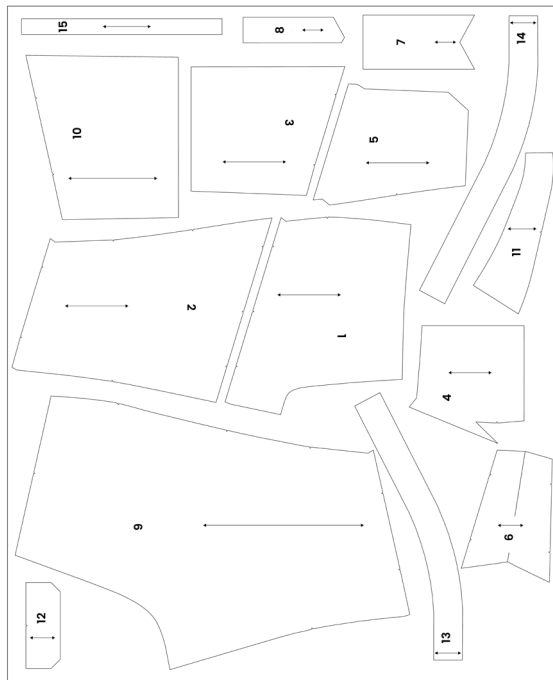


PATTERN: WRONG SIDE

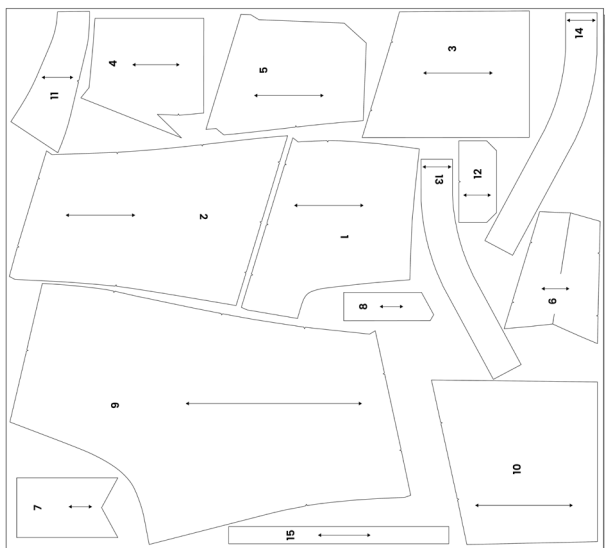
SIZES XS-L: 60"/152.4CM



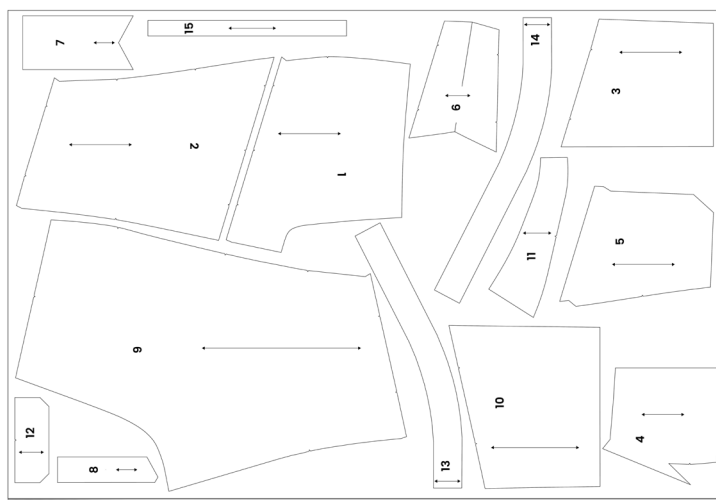
SIZES XL-4XL: 60"/152.4CM



SIZES XS-L: 44"/111.76CM



SIZES XL-4XL: 44"/111.76CM





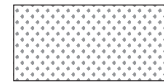
## ILLUSTRATION KEY



FABRIC: RIGHT SIDE

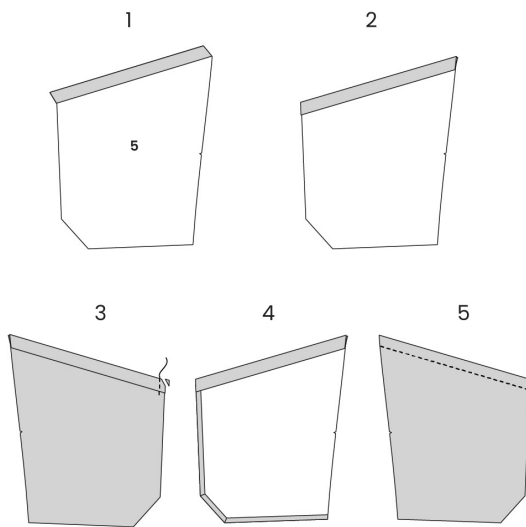


FABRIC: WRONG SIDE



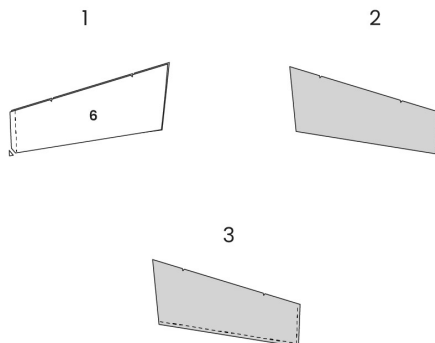
INTERFACING

## CARGO POCKET

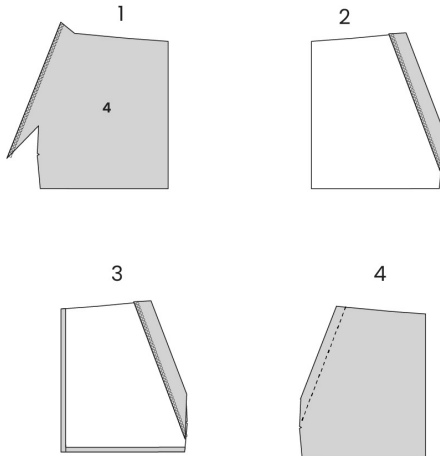


1. Fold hem cargo pocket (5)  $3/4"$  (1.905 cm) and press
2. Fold hem  $3/4"$  (1.905 cm) and press again
3. Fold pocket hem to right side of fabric. Stitch hem down
4. Turn hem right side out and fold and press  $1/2"$  (1.27 cm) seam allowance around pocket
5. Top stitch pocket hem  $3/4"$  (1.905 cm) from hemmed edge.

## CARGO POCKET FLAP

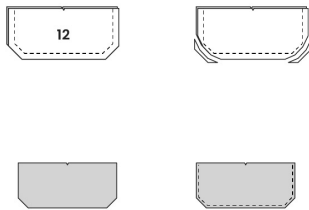


1. Fold pocket flap (6) right sides together and sew short end
2. Turn right side out and press
3. Edge stitch  $1/8"$  (.3175 cm) around edges (optional)



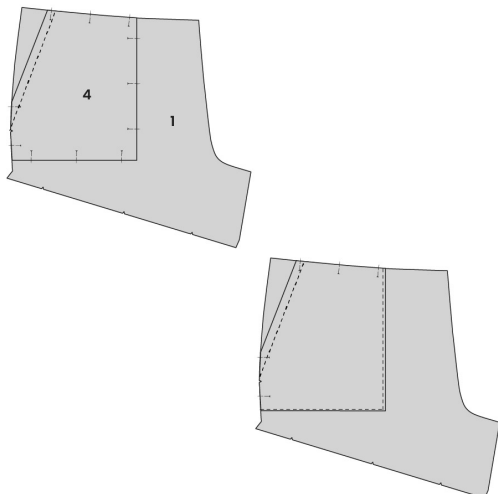
1. Finish front pocket (4) hem edge
2. Fold hem 1" (2.54 cm) and press
3. Fold and press 1/2" (1.27 cm) seam allowance around pocket
4. Stitch hem 3/4" (1.905 cm) from hemmed edge

## BACK POCKET FLAP

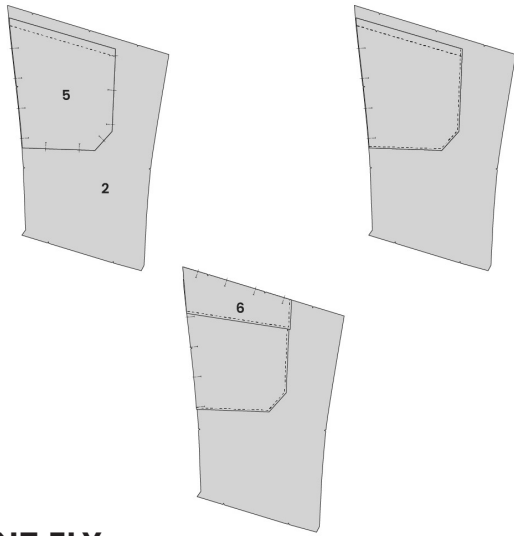


1. Stitch pocket flaps (12) right sides together
2. Clip corners
3. Fold right side out
4. Top stitch 1/8" (.3175 cm) from edge (optional)

## FRONT



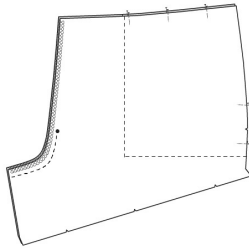
1. Place front pocket (4) on front (1), matching notches. Pin to hold in place.
2. Top stitch 1/8" (.3175 cm) from edge



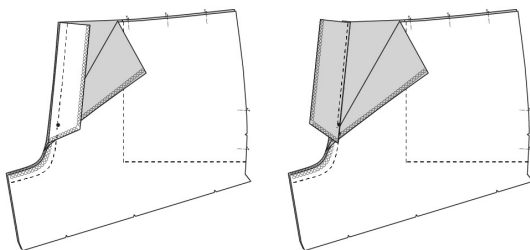
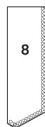
1. Place cargo pocket (5) on front middle piece (2), matching notches. Pin to hold in place
2. Top stitch cargo pocket 1/8" (.3175 cm) from edge
3. Place cargo pocket flap (6) on front middle piece (2), matching notches. Pin to hold in place

## FRONT FLY

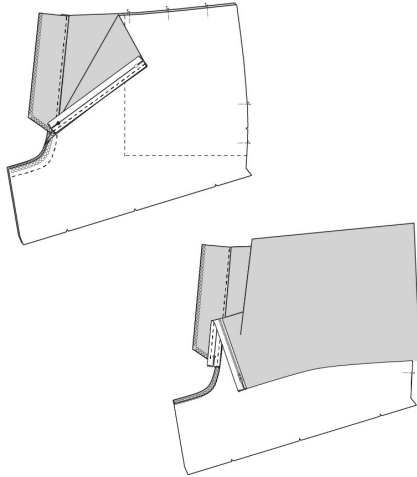
1. Stitch front (1) with right sides together to the dot.



## ATTACH SLEEVE PIECING

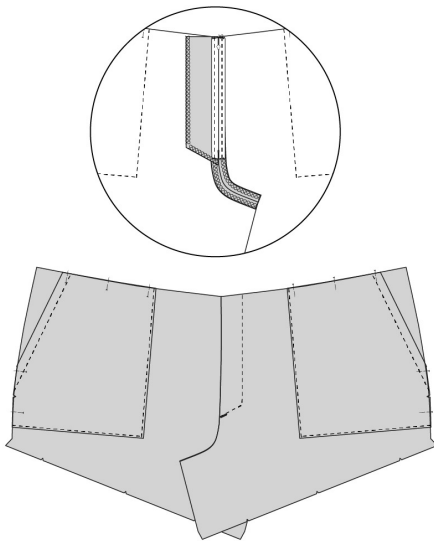


1. Finish outer edge of the left fly facing (8)
2. Sew left fly facing to left side of front to the dot.
3. Fold seam allowance toward left fly and under stitch 1/8" (.3175 cm) from seam



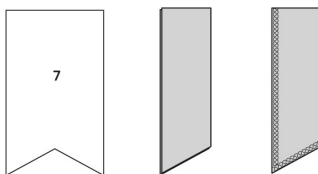
1. Place zipper at the top and line up with center front edge. Pin in place
2. Stitch zipper 1/4" from edge
3. Pin other side of zipper on left fly, making sure front right seam over lap left seam by an 1/8".
4. Stitch zipper in the middle of zipper tape.

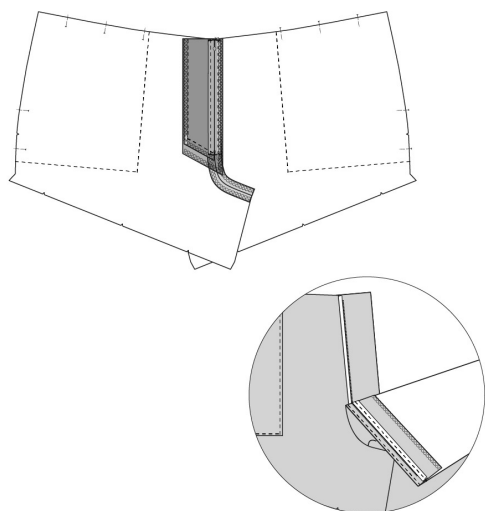
## BELT- VIEW B



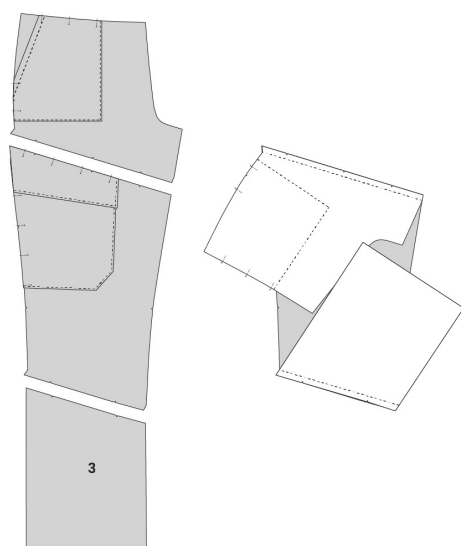
1. Zip zipper
2. Fold left fly to left side, pin in place
3. Top stitch left fly and reinforce at center front seam

1. Fold right fly (7) in half with wrong side together
2. Press
3. Finish edges

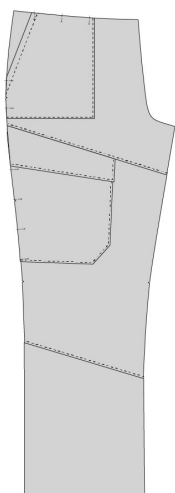




1. Sew right fly to right front seam allowance over existing seam.
2. Tack down right fly to left fly at edge to hold in place

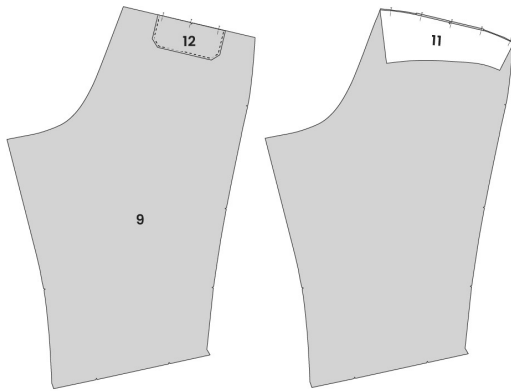


1. Pin right sides together, front (1) to front middle (2) and front bottom (3) to front middle (2), matching all notches.
2. Stitch together

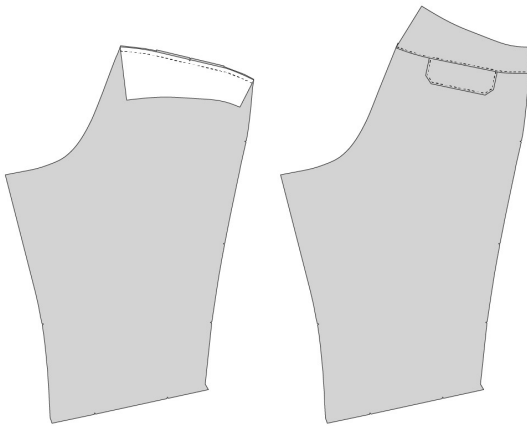


1. Press seam allowance up toward top of pant
2. Top stitch 1/8" (.3175 cm) from seam (optional)

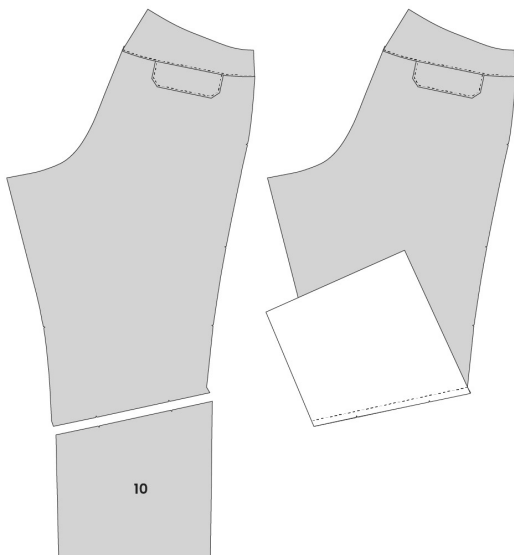
1. Pin back flap (12) to back (9) matching notches
2. Pin back yoke (11) to back (9) matching notches

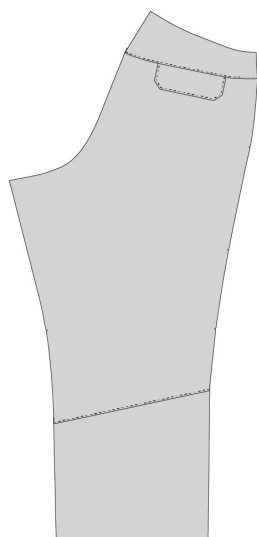


1. Sew back yoke seam
2. Press seam allowance up towards yoke
3. Top stitch 1/8" from seam edge (optional)

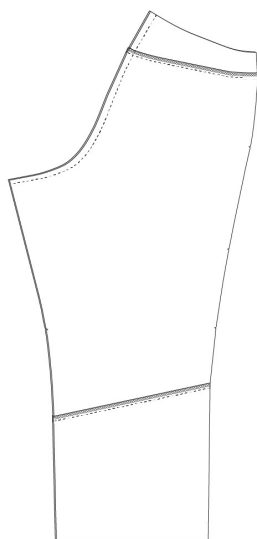


1. Pin right sides together, back (9) to back bottom (10), matching all notches.
2. Stitch together

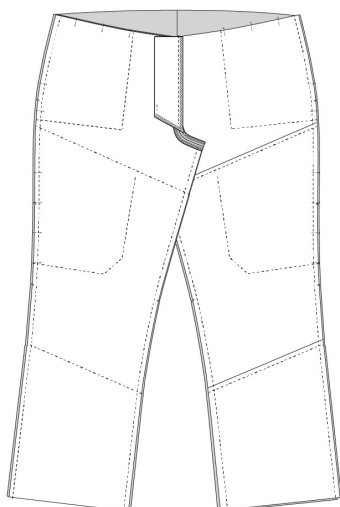




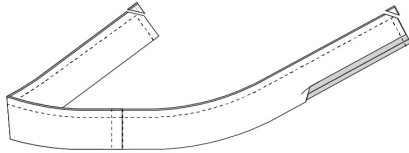
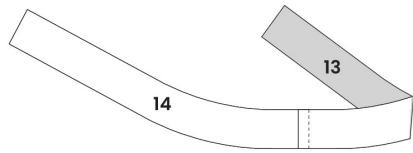
1. Press seam allowance up toward back pant piece.
2. Top stitch  $1/8''$  (.3175 cm) from seam (optional)



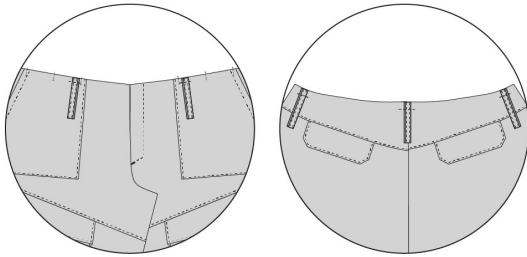
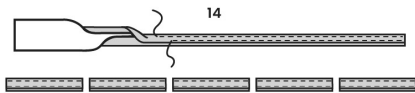
1. Stitch back pieces with right side together at crotch
2. Press



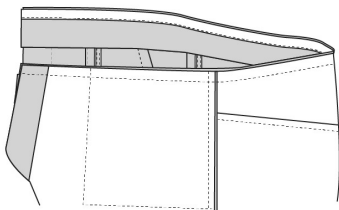
1. Pin front and back pants with right sides together at side seams and inseam , matching all notches
2. Stitch side seams and inseam
3. Press all seams towards back



1. Stitch right waistband (14) and left waistband (13) pieces right sides together at center back.
2. Pin waistband right sides together at top edge matching center back seams.
3. Stitch top edge and side of waistband
4. Clip edges
5. Turn right side out
6. Press

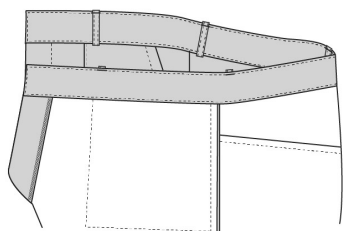
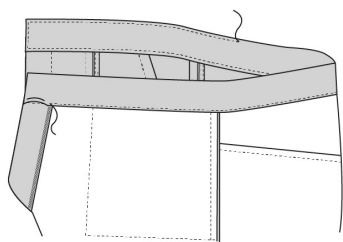


1. Fold waistband loop in half (14) wrong sides together and press
2. Fold in seam allowance on both sides and press
3. Stitch 1/8" (.3175 cm) from each edge
4. Cut into five even pieces
5. Pin one at center back seam, 2 - 1/2" (1.27 cm) from side seam (both sides) and 2 - 1/2" from front pocket edge (both sides).



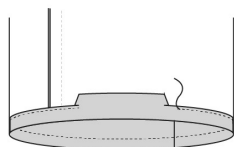
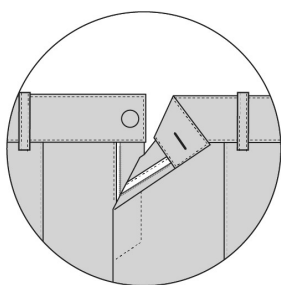
1. With right sides facing. Pin non-folded waistband seam allowance to top of pant.
2. Stitch together
3. Press seam allowance up towards waistband





1. Top stitch bottom waistband 1/8" (.3175 cm) from seam being sure to catch waistband edge on other side.
2. Edge stitch around waistband edges 1/8" (.3175 cm) from edge
3. Fold belt loops under 1/2" (1.27 cm) at loose end and pin to top of waistband
4. Stitch and back stitch a few times at the top of belt loops

## BUTTON & HEM



1. Make a button hole in left waistband at marking. Sew button to right waistband at marking
2. Hem lower edge of pant with 1" (2.54 cm) - fold 1/2" (1.27 cm) twice and top stitch.

SHARE YOUR ADIRA CARGO PANT WITH US.

TAG US ON INSTAGRAM  
TO SHARE YOUR MAKES!



**@ COVERMECHIC**

**#COVERMECHICADIRACARGOPANT**

**EDGE STITCH**

A stitch done a scant 1/8" from the folded or seamed edge.

**NOTCH**

Usually, the notch is shown on a pattern with a dark diamond. They should be matched on seams when joining for sewing.

**TOP STITCH**

A sometimes decorative, sometimes functional stitch that is usually 1/4" from the edge of a seam. For instance, once a vest is turned or a facing to a jacket is turned and pressed, one may stitch 1/4" from the edge on the top of the garment to provide a bit of stabilization. This can be done in same or contrasting thread, depending on the decorative effect one wishes to achieve.

**RIGHT SIDE**

The right side of the fabric is the design side. There are instances of fabric with no right or wrong side visible, and the determination and appropriate markings are then made by the person doing the pattern cutting and sewing.

**UNDER STITCH**

A 1/8"-1/16" (.15875-.3175cm)stitch close to seam that sews through the facing or lining of a garment, etc. but not through the surface.

**WRONG SIDE**

The wrong side of the fabric is the side upon which there is no design. There are instances of fabric with no wrong side visible, and the determination and appropriate markings are then made by the person doing the pattern cutting and sewing.

This image shows a single sheet of white paper with horizontal ruling lines. The lines are evenly spaced and run across the width of the page. There are no margins, text, or other markings on the paper.